

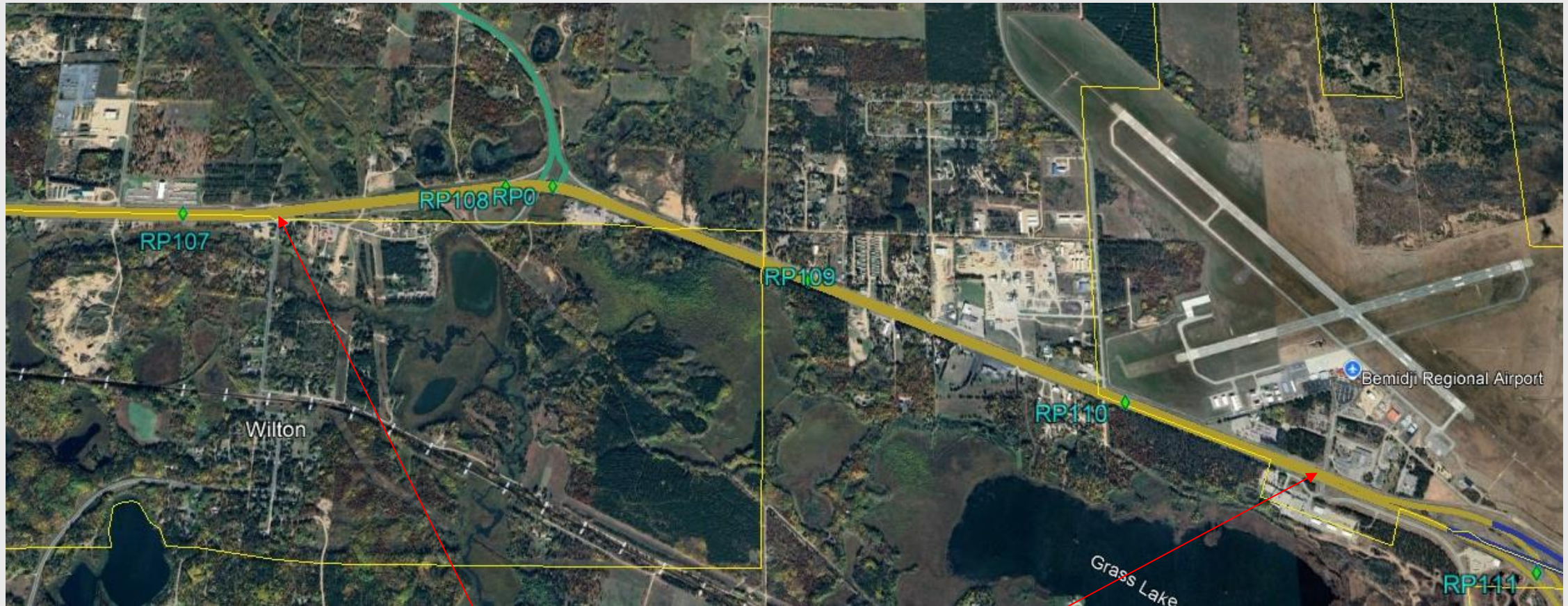


# District 2 J Band and Joint Bond 2023-24

Nancy Graham | D2 Materials Engineer



# US2 From Wilton to Bemidji



Application from R.P. 107.3 to 110.5

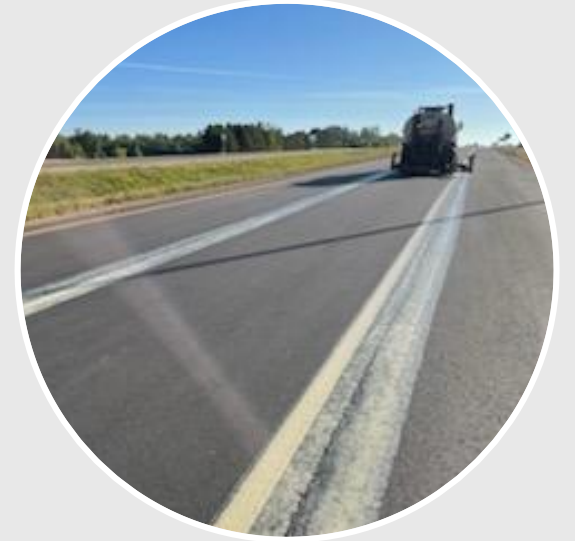
# US 2 from Wilton to Bemidji



US 2 EB and WB from Wilton to Bemidji was paved in 2022

The next season Joint Bond was applied, at an application rate that varied from 0.08 to 0.13 gal/ft.

Mobile Reflectometer readings were performed on the Pavement Markings prior to placement of the Joint Bond and follow-up readings have been performed to track the changes in the reflectivity.





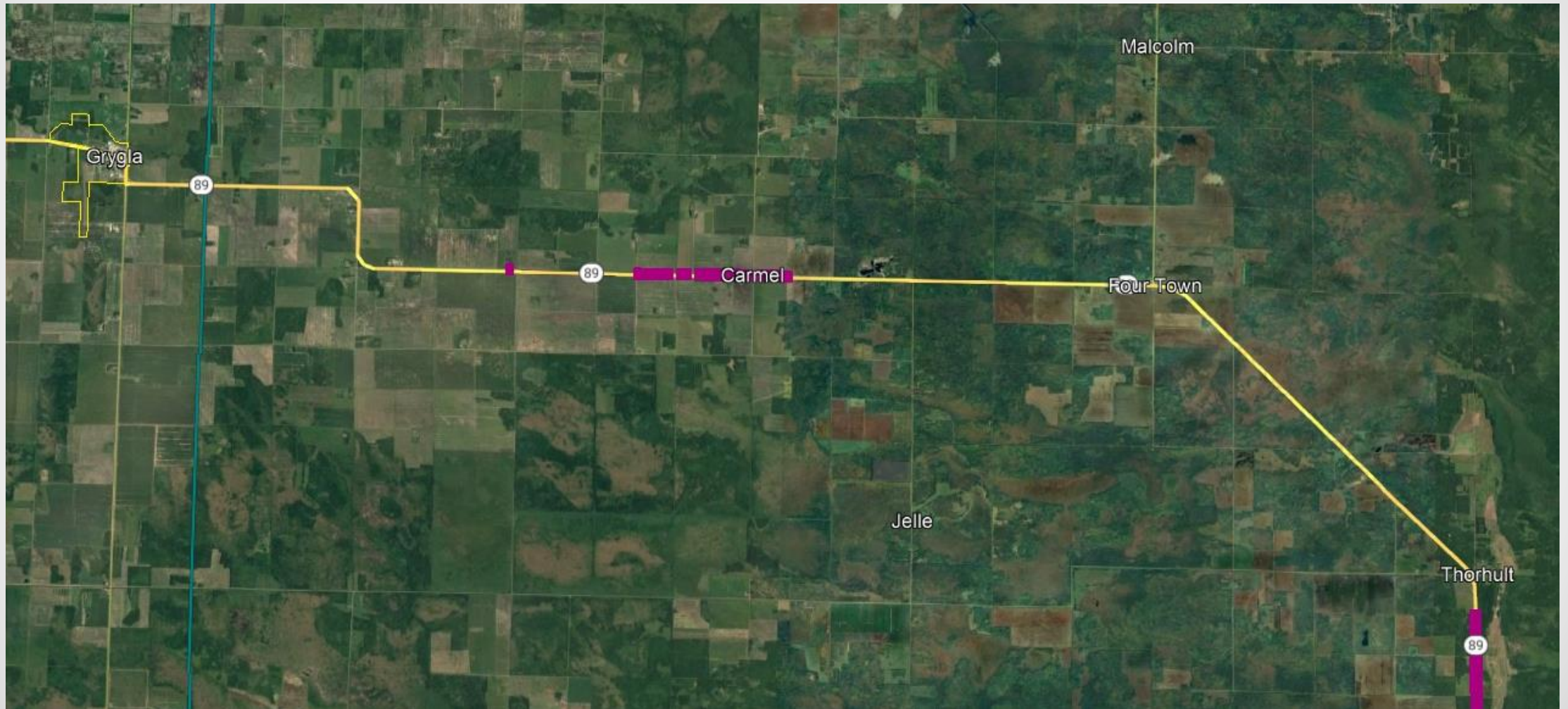
# US2 from Wilton to Bemidji



Test Date	Route	Beg RP	End RP	Direction	Line	Presence	8/29/23M	9/18/23	10/1/23	10/16/23	9/24/24	Color
							CD	MCD	MCD	MCD	MCD	
							Before	After	After	After	After	
8/29/2023	2	107.3	110.5	Inc	LEL	5	266	na	na	na	142	Yellow
8/28/2023	2	107.3	110.5	Inc	LL	5	304	142	196	208	146	White
8/28/2023	2	107.3	110.5	Inc	REL	5	301	175	237	230	112	White
8/29/2023	2	110.5	107.3	Dec	LEL	5	285	na	na	na	153	Yellow
8/28/2023	2	110.5	107.3	Dec	LL	5	327	344	na	288	138	White
8/28/2023	2	110.5	107.3	Dec	REL	5	319	302	284	264	134	White



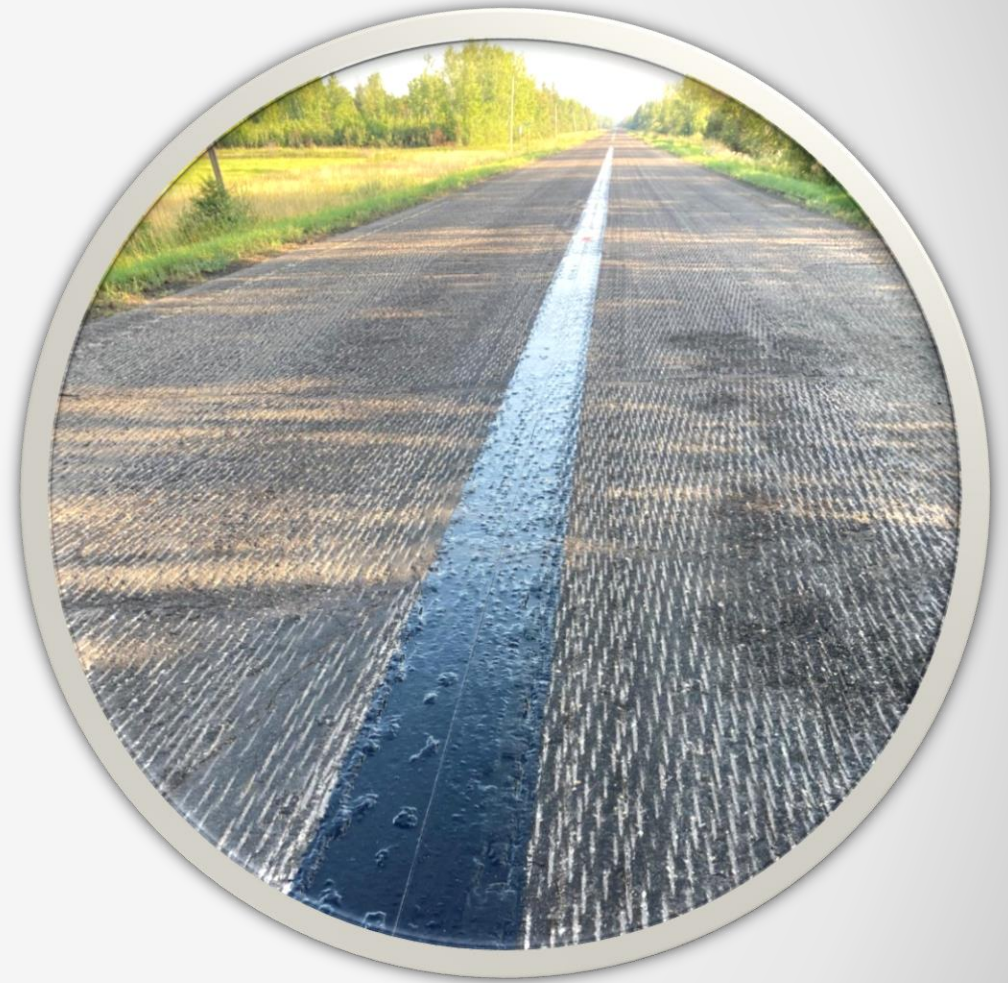
# MN 89 J Band(VRAM)



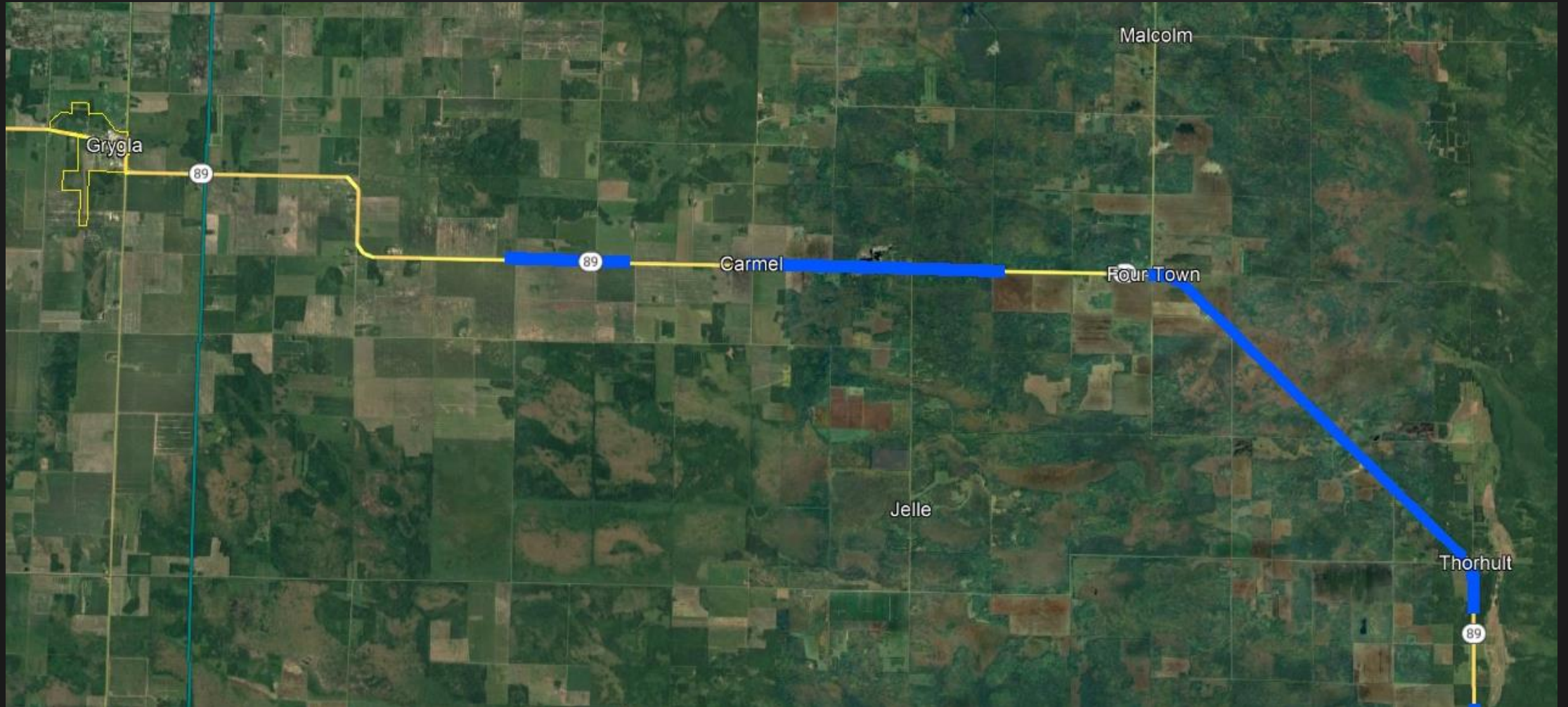


## MN 89 J Band(VRAM)

- VRAM placed 9,727FT + 7,850 ft = 17, 577 FT 18" wide on centerline
- Placed directly on milled surface prior to tack coat and bituminous paving
- Construction issues – traffic cannot sit or drive slowly over Jband or it will pull up.



# MN89 Joint Bond





# MN89 Joint Bond

- 60,900 ft = 11.53 mi should have sprayed centerline joint/rumble and edge line rumbles.
- Difficult in construction is timing for placement of the material.





# MN89 Joint Bond



2/28/2025

[mndot.gov](http://mndot.gov)

# Thank You!

**Nancy Graham**

*[nancy.graham@state.mn.us](mailto:nancy.graham@state.mn.us)*

218-214-3532