



 *Keeping Utah Moving*

Cody Marchant, P.E.

cmarchant@utah.gov

NATIONAL PAVEMENT PRESERVATION CONFERENCE



IMPACTS AND BENEFITS FROM PAVEMENT PRESERVATION



MICHIGAN STATE
UNIVERSITY



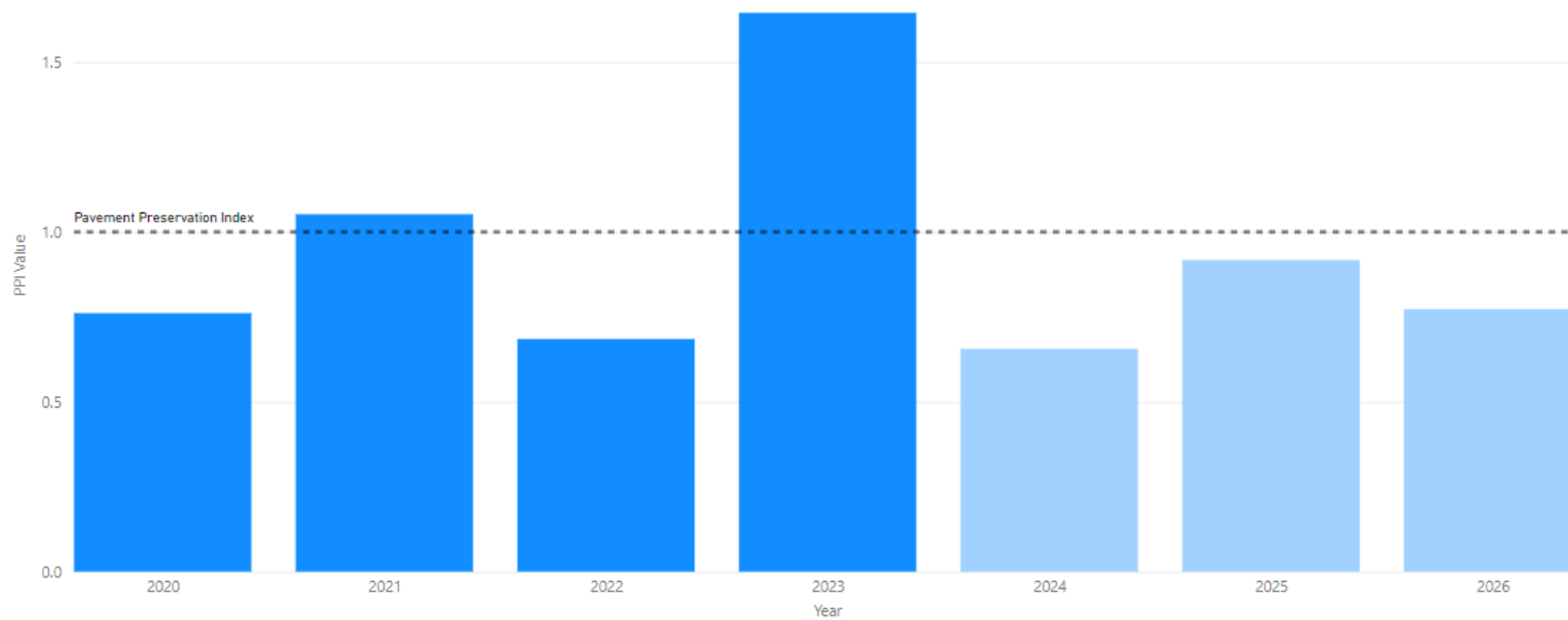
UDOT Preservation Strategy

- ▶ Good Roads Cost Less
 - Preservation Index
 - Between 0.8 & 1.2
 - International Roughness Index (IRI)
 - High Volume >65% Good & <5% Poor
 - Low Volume >50% Good & <10% Poor

Preservation Index Goal – 0.8 to 1.2

Region 4 Pavement Preservation Index

Select one system to view Region 4 Pavement Preservation Index



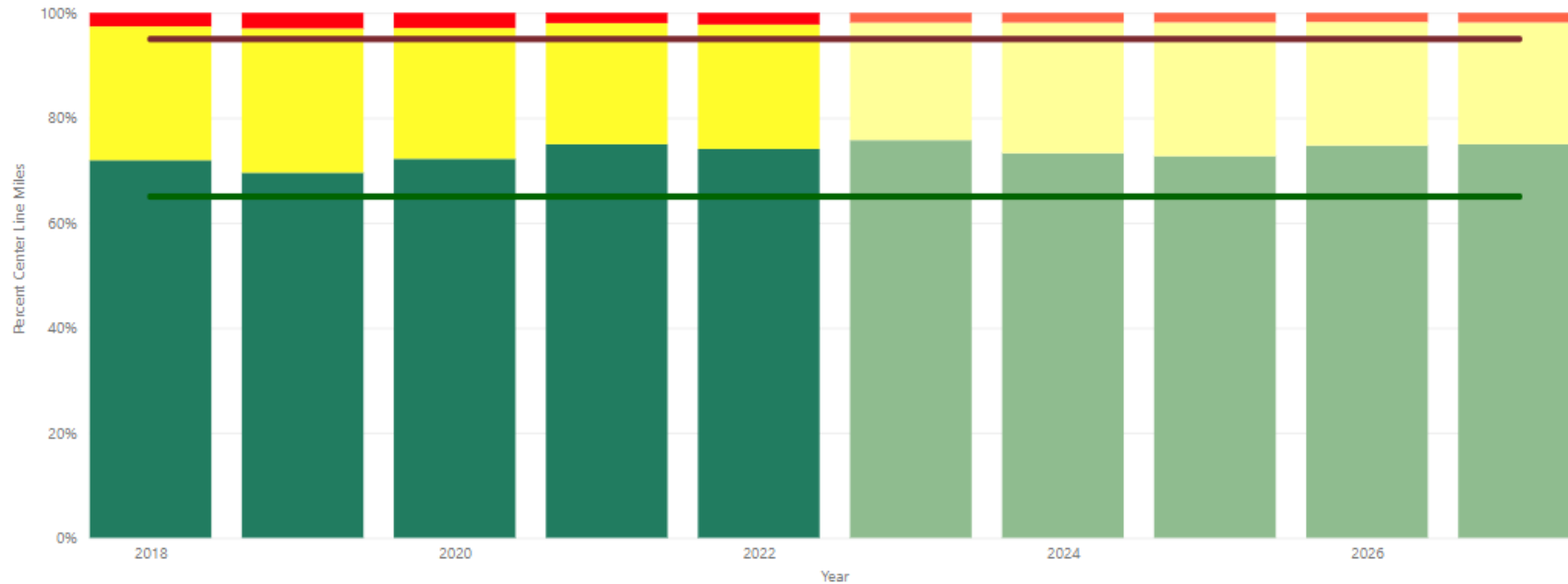
High Volume Goal > 65% Good & < 5% Poor

Region 4 Pavement Condition with Forecast for the Entire Network

Select one system to view Region 4 pavement condition

High Volume Low Volume Overall

● % Good: IRI < 95 in/mi ● % Fair ● % Poor: IRI > 170 in/mi ● Forecasted Good ● Forecasted Fair ● Forecasted Poor ● Percent Good Target (if applicable) ● Percent Poor Target (if applicable)



Low Volume Goal > 50% Good & < 10% Poor

Region 4 Pavement Condition with Forecast for the Entire Network

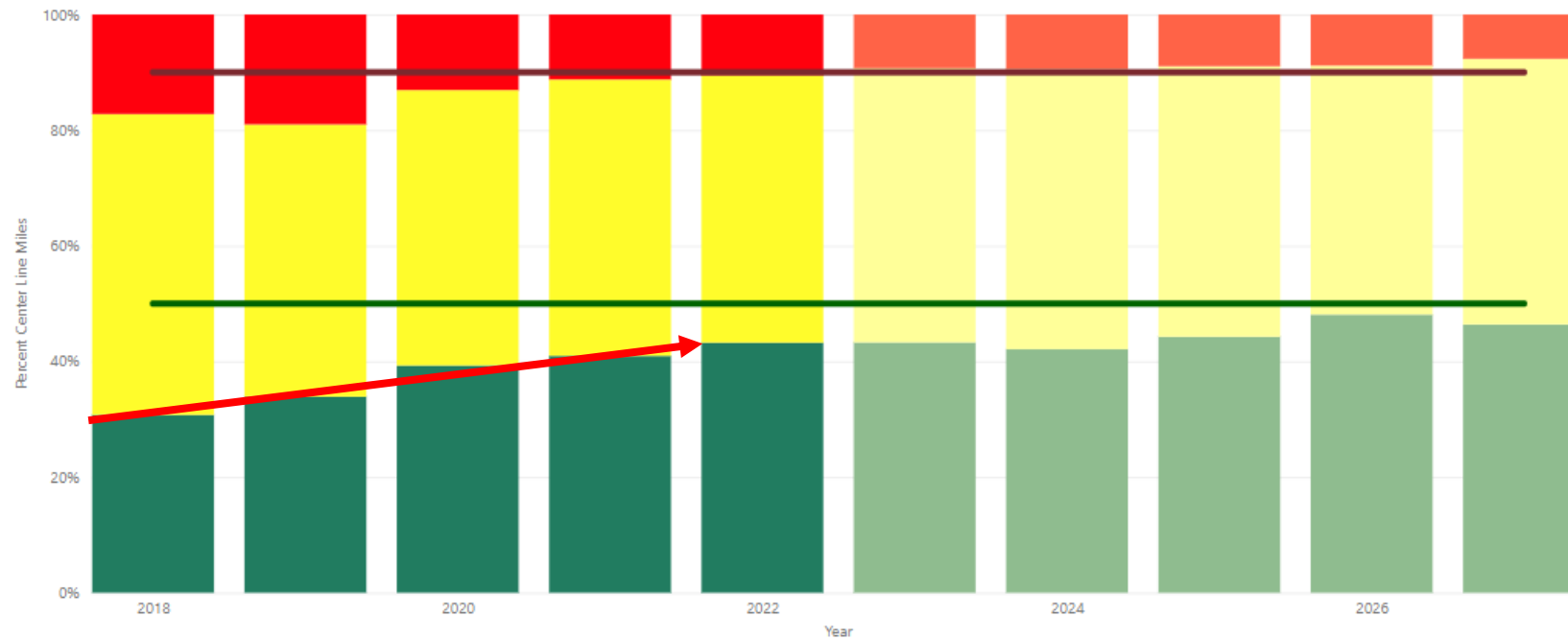
Select one system to view Region 4 pavement condition

High Volume

Low Volume

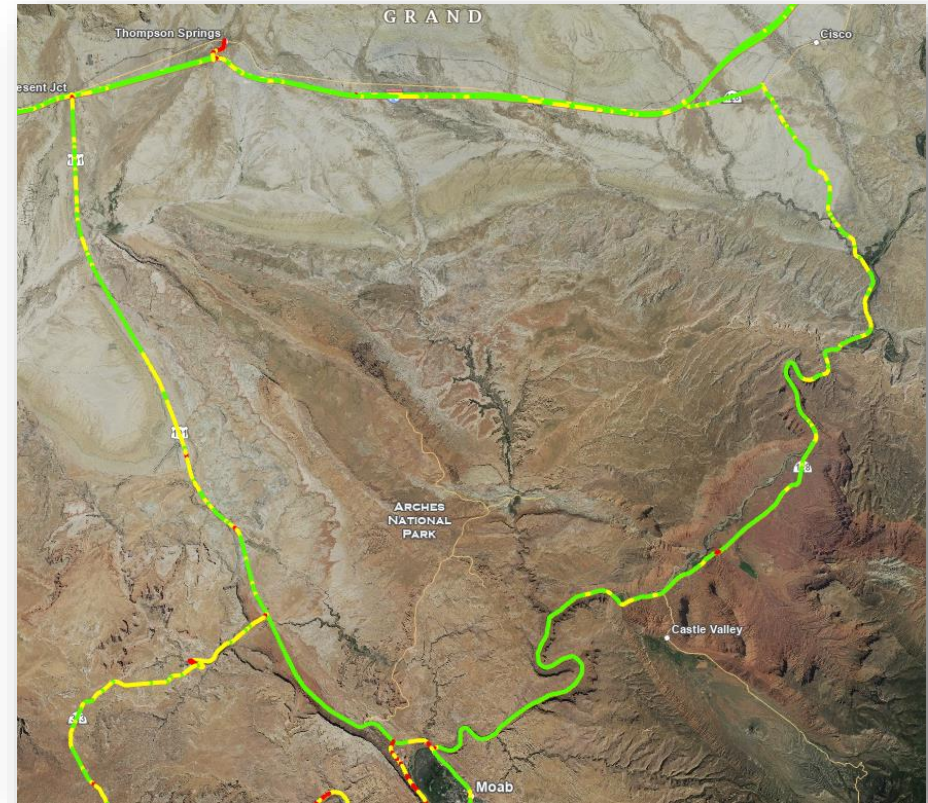
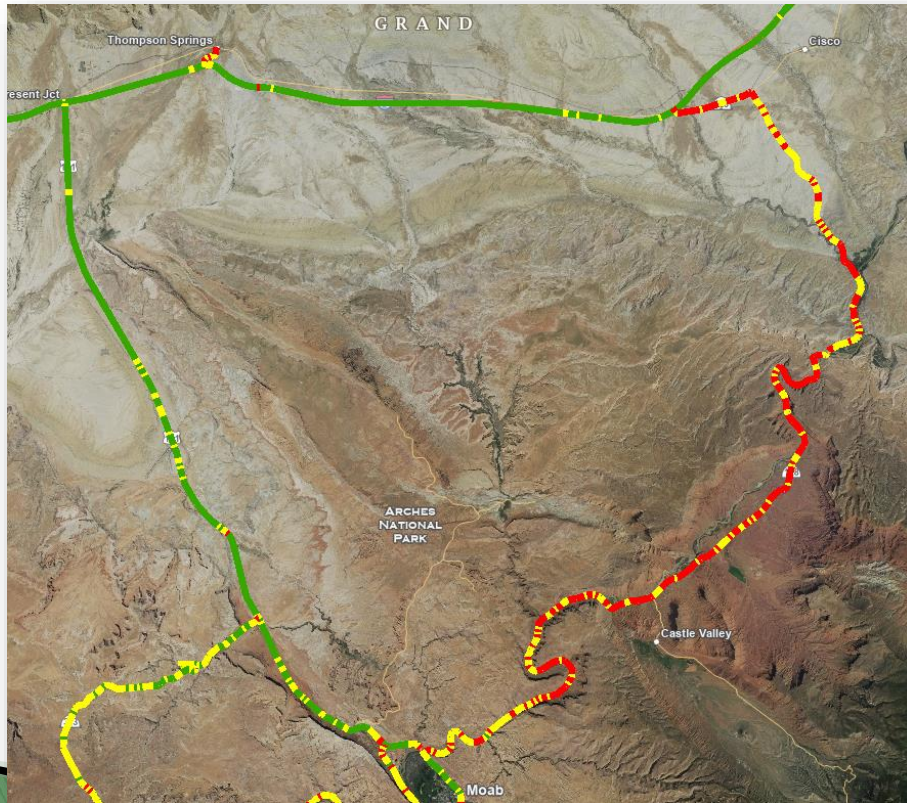
Overall

● % Good: IRI < 95 in/mi ● % Fair ● % Poor: IRI > 170 in/mi ● Forecasted Good ● Forecasted Fair ● Forecasted Poor ● Percent Good Target (if applicable) ● Percent Poor Target (if applicable)



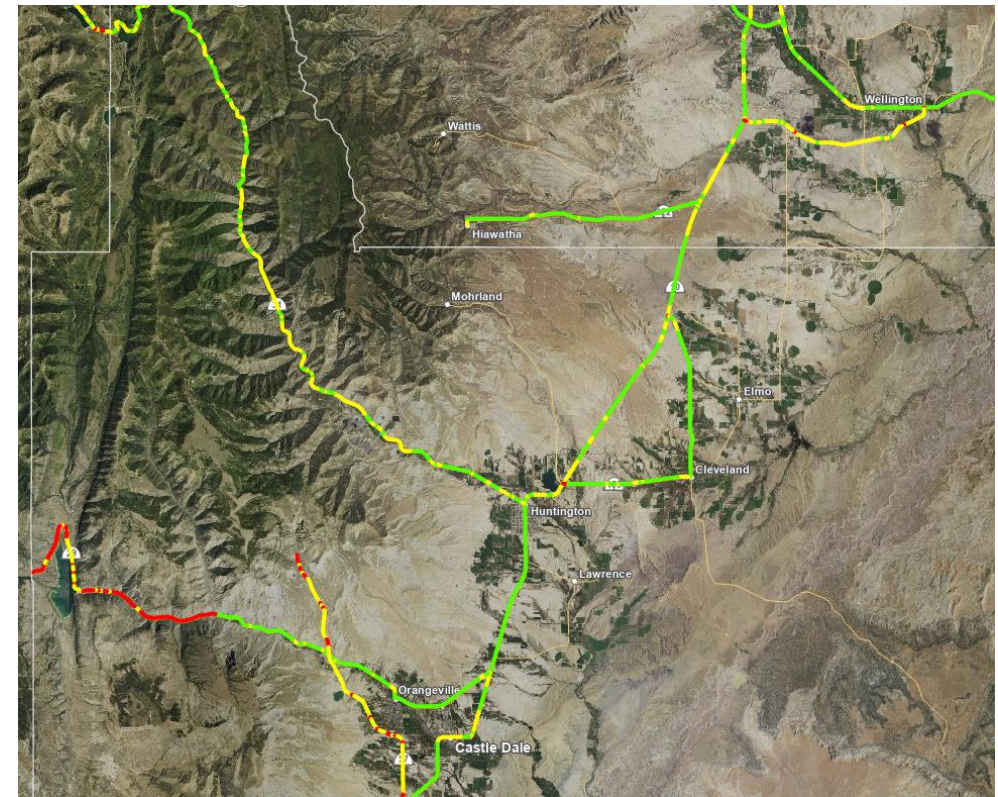
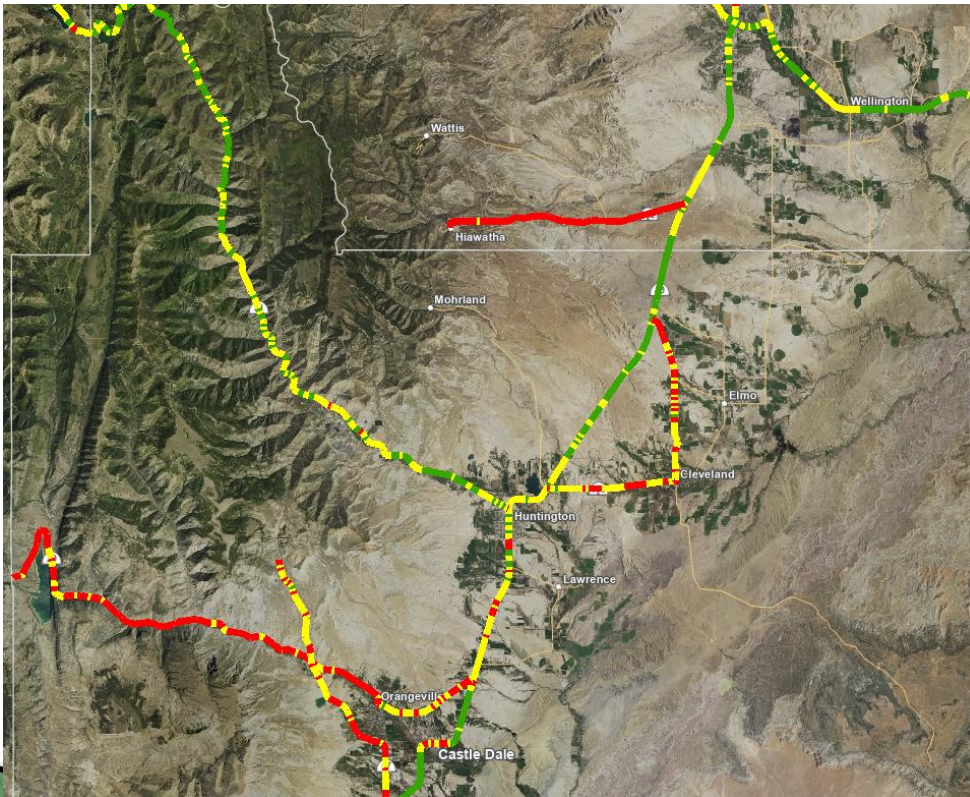
Successful Preservation

- ▶ Utah's Gas Tax to fund Low Volume Roads (2016)
 - Allowed for SMA treatments in areas we couldn't do more before.



Successful Preservation

- ▶ Utah's Gas Tax to fund Low Volume Roads (2016)
 - Allowed for SMA treatments in areas we couldn't do more before.



Successful Preservation

► Maintenance Chip Seal Program

- Provided an opportunity to cover more SA than we would otherwise.

- 2022 & 2023 Projects 45.8%
- 727 Additional Surface Areas

