



Pavement Preservation

Pavement Program and Treatments

Tom Laws, AICP – Planning Manager

Rick Patricelli, PE - Pavement Management Engineer

Getting to Know ACHD

- Responsible for all local roads, bridges, streets, and alleyways in Ada County
- Six Cities
- 811,000 Residents



Getting to Know ACHD

- Established in 1971
- Governed: by a five-member elected Commission
- Over \$3B in assets and 400+ full time ACHD team members



Getting to Know ACHD

- 5,355 Lane Miles
- 13,357 roadway intersections
- 2,854 miles of sidewalks
- 418.76 miles of bike lanes
- 4,362 Cul-de-sacs
- 29,466 ped ramps
- 830 Bridges

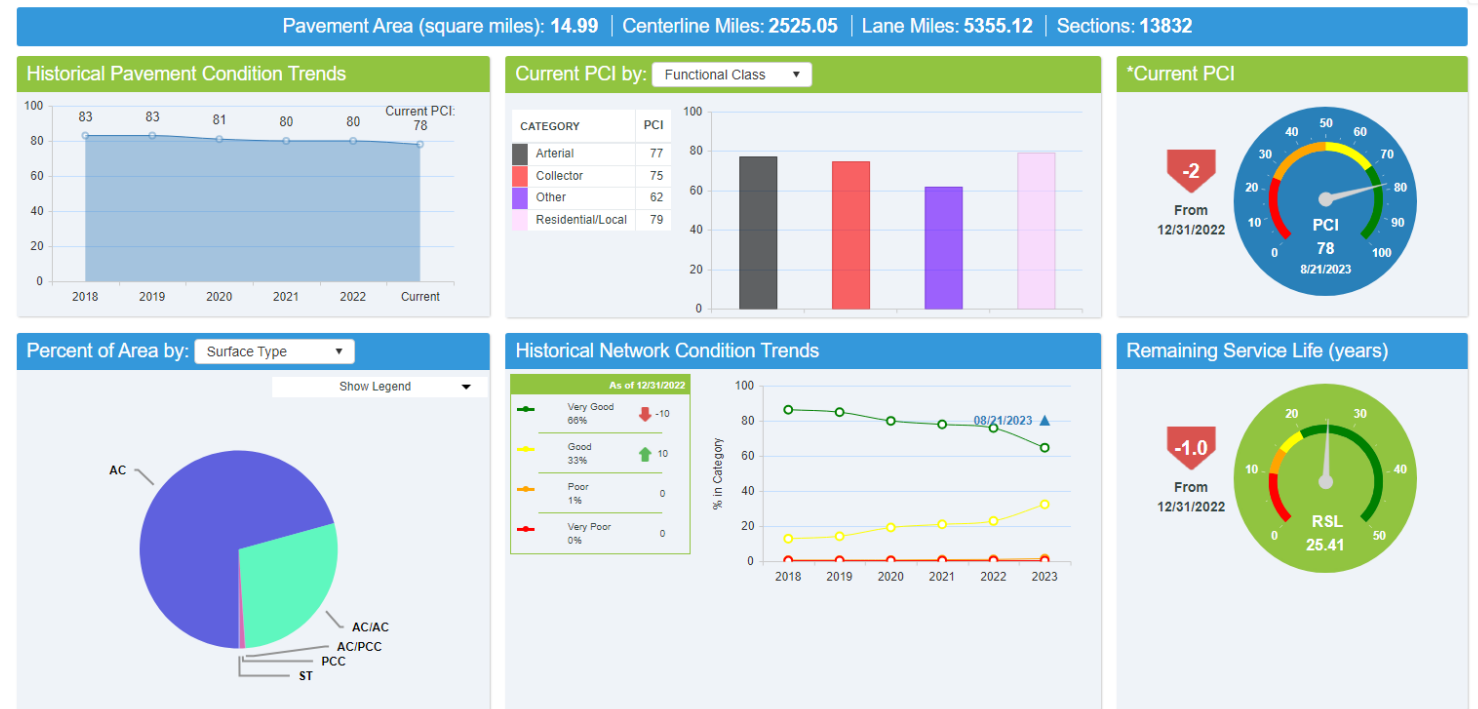


Pavement Network

Functional Class	Total Sections	Total Center Miles	Total Lane Miles	% Area
Arterial	599	404	1163	21.7%
Collector	873	344	708	13.2%
Residential	11681	1674	3349	62.5%
Alleys	413	41	46	0.9%
Gravel	266	62	90	1.7%
Total	13832	2525	5355	100.0%

Current PCI -78

Executive Dashboard



Treatment Types and Programs

/// Maintenance Programs

- /// Chip Seal / Fog Seal
- /// Crack Seal

/// Capital Maintenance Programs

- /// Micro-seal
- /// Crack Seal
- /// Cul-de-Sac – Treatment (Slurry)
- /// Cul-de-Sac – Repair (Reconstruct)
- /// Residential Slurry Seal

/// Capital Programs

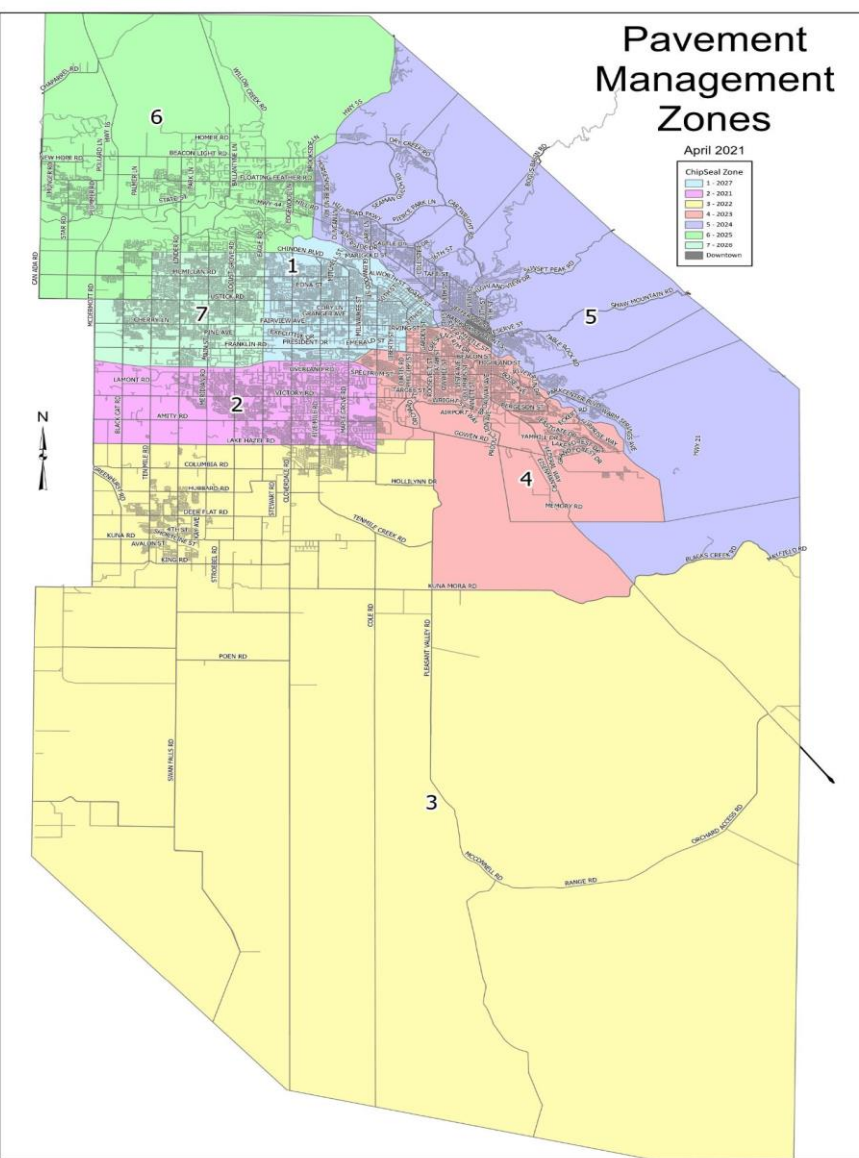
- /// Residential Capital Maintenance
- /// Roadway and ADA Improvements (Federal)
- /// Arterial and Collector Capital Maintenance

Total Annual Pavement Treatment Budget in range of \$30M+



Chip Seal - Highlights

- PMZ (7) – Seven Year Rotation - Bread and Butter – Crack Seal completed previous year
- Each PMZ was developed to regionalize the treatment and evenly distribute Arterials, Collectors and Residentials
- Goal is to Treat all Arterial and Collectors and 50% of Residential each year. (Full Production)
- Timeframe – May-September
- Inhouse Crews – Own Pit
- Operation and Treatments have been very successful over the years. COVID and Manpower shortages since COVID have slightly hindered production, but ACHD plans to continue to ramp up Lane Miles each year until back to full production. Reduction in Lane Miles has affected the PCI, which further stresses the importance of Pavement Treatments.



Chip Seal

Quick Overview of ACHD's Operation

- Pavement Markings Obliteration (if necessary)
- Sweep (Until Clean)
- Chip Seal (Moving TC)
- Sweep (Loose Chip)
- Fog seal
- Pavement Markings



Public Outreach

- /// Postcard Mailers – All affected Residents
- /// Social Media
- /// Website

ACHD connecting you to home

Home About ACHD Commission Commission Agendas Forms Employment Contact Us

Chip Seal Information for 2023

Return to Main Maintenance Page

Asphalt deteriorates over time because of the sun and weather. Chip Seal helps seal the surface and helps protect the road. Some preparation work will take place throughout the spring, and the Chip Seal process traditionally begins after the Memorial Day weekend.

As part of the ACHD maintenance program crews chip seal street surfaces (including new streets) to protect them from water and weather damage, so they stay in good condition. Crews start preparing the roadway for chip sealing in early spring, as the weather allows.

- The Chip Seal Process
- Interactive Chip Seal Map
- Preventive Maintenance Zones Map (Shows when will your area will be chip sealed)

Where will we be this Year?

This year ACHD will be chip sealing **Zone 4** which incorporates portions of Myrtle Street, south of the Boise river, portions of Curtis Road, Franklin Road, and Cole Road south of the interstate, east of Pleasant Valley Road and north of Kuna Mora Road. This year's Chip Seal season is scheduled from May 30th through September 2023, weather permitting. **2023 Informational Chip Seal Mailer.**

The chip sealing process consists of five phases:

- sweeping prior to the chip seal
- applying the chip seal
- sweeping excess chips
- applying the fog seal
- sweeping after the fog seal

On-street parking will be affected during each phase. Temporary No Parking signs will be placed in most areas. When you see these signs, it is an indication that crews will be in the area within approximately the next 24 to 48 hours. This is a mobile operation and it is weather and equipment dependent.

We appreciate your patience during this time as we maintain your roadways and strive to maintain our roadway rating as, "the best in the Northwest".

For additional information:

ACHD Main Line: 208-387-6100 Adams Division 208-387-6325 Cloverdale Division 208-387-6350 Or contact us at: Tell Us

ACHD ACHD Chip Seal Program (Public Application)

ACHD Website ACHD Chip Seal Page

Find address or place

Legend

ACHD Chip Seal Program

ACHD Chip Seal Program Public

Status

- Planned - Scheduled Chip Seal
- Chipped - Road has been Chipped
- Swept - Road has been Swept
- Completed - Chip Seal Completed

ACHD Chip Seal Maintenance Areas Public

ChipSealStatus

- Planned - Indicates where crews will be working this season
- In-Progress - Indicates where crews will be working during the week
- Completed - Indicates where crews have completed



Questions

