

NHDOT STATE REPORT



Eric Thibodeau – Pavement Management Chief



PRESENTATION OVERVIEW

Bonded Wearing Course (BWC)

- History
- Specification Changes Over The Years
- Treatment Changes



BWC – History

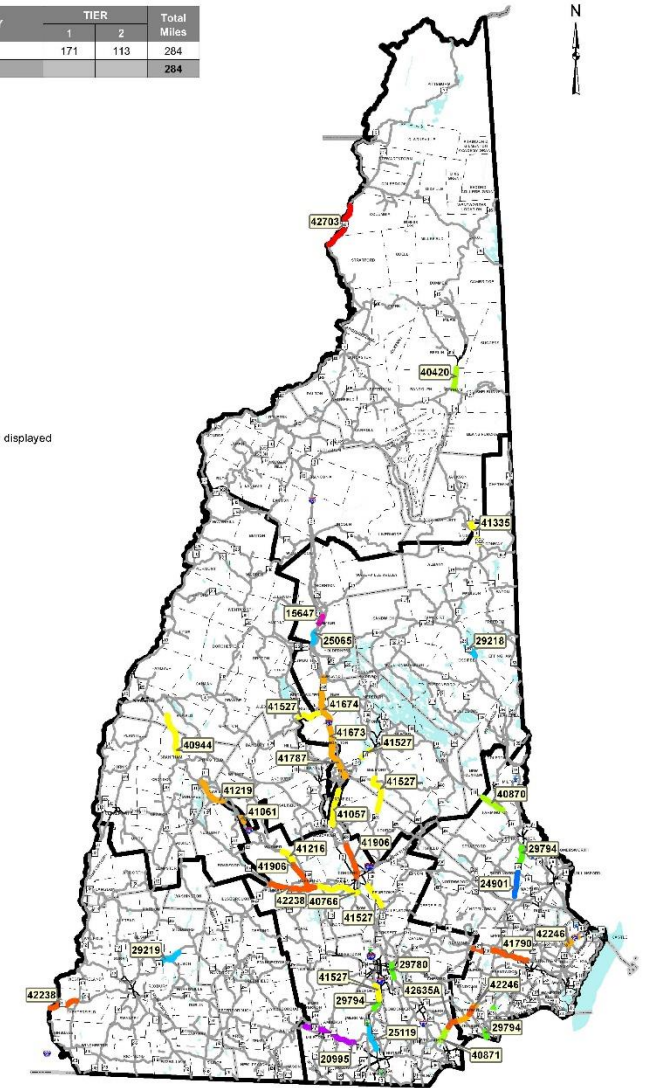
- 1998: Test Section #1 (US 202)
- 2004: Test Section #2 (NH 13)
- 2009–2023: 35 Projects
- Tier 1 and Tier 2 roadways
 - ~350 miles (8%)
- Medium to High Volume
- One (1) Type B
- Two (2) Asphalt Rubber
- Performance!?

Historic BWC

STRATEGY	TIER		Total Miles
	1	2	
BWC	171	113	284



Notes:
Length in miles
BWC and BWC-AR displayed



BWC – Specification Changes

- Emulsion Pay Item Added
- MTV Required
- No RAP
- Remove and Replace for Segregated Mix
- Introduced Penalties:
 - Single Non-Compliant:
 1. AC Content: outside of ± 0.4 to $\pm 0.7\%$ of JMF = 5% Reduction
 2. AC Content: $> \pm 0.7\%$ = Remove and Replace & Shut Down
 - Consecutive Non-Compliant:
 1. Shut Down
 2. AC = 10% Reduction
 3. Gradation = 5% Reduction
 4. Engineer's discretion – Remove & Replace



BWC – Specification Changes

- **Placement Windows:**
 - Generally Memorial Day to Labor Day
- **Prior to Placement:**
 - Paving Plan & Pre-Pave Meeting
 - Crew Experience Requirements
 - a. The foreman and major portion of the crew must have actively participated in at least 3 Bonded Wearing Course projects over the last 3 years.
 - b. The total Bonded Wearing Course placed for the listed projects must sum to at least 15,000 tons.
 - c. Equipment or crew substitutions are allowed as long as their qualifications were previously approved by the Department.
- **During Placement:**
 - 2nd roller must be on site
 - Adequate Trucking



BWC – Treatment Changes

- **Previous Method:**

- Spot inlays (if needed)
- Micro Milling
- Line Removal
- Crack Filling
- BWC (TW)
- Fog Seal Shoulders

- **New Method:**

- Spot inlays (if needed)
- Micro Milling (FW)
- Crack Filling
- BWC (FW)

BWC – Treatment Changes

- **Advantages:**
 - Reduced Traffic Control
 - Potentially Reduces # of Subs
 - Reprofilng
 - Flexibility with Paver Pulls
 - Improves Ride Quality
 - Full Width Treatment



Questions?