

Delaware State Report

Mike Beulah
DeIDOT Pavement Management

September 18, 2023
Indianapolis, Indiana



Annual Report

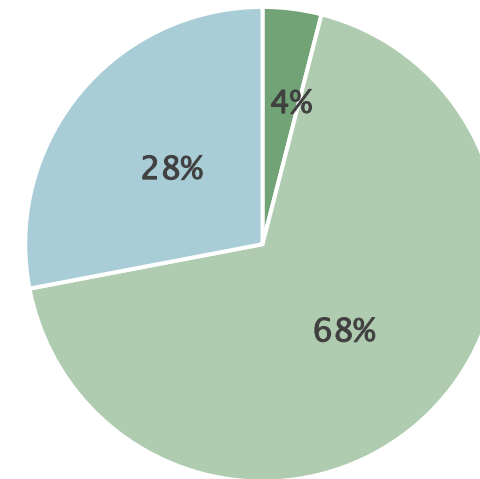
▶ 2022 Total Tonnage:
578,844.55 tons (statewide)

▶ Treatments used:

- Mill and fill/ Overlay
- Modified edge paving
- Thin lift paving
- Chip sealing
- Fog sealing
- Hot mix and PCC patching

▶ Total Program Budget FY23
◦ \$73.5M

Budget Breakdown



■ Design ■ Rehabs ■ Preservation

rehabs include cost of upgrading signing, striping, guardrail, ADA ramps, and signals

Use of Recycled Asphalt Pavement (RAP)

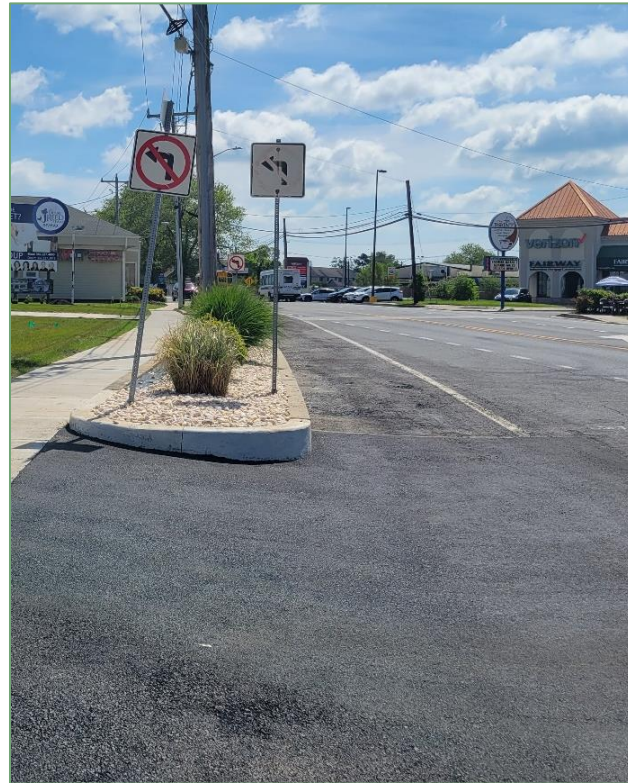
- ▶ Delaware allows up to 40% RAP in 64–22 mixes (10% on polymer modified pavements)
- ▶ RAP is used in all Superpave designs
 - 19mm, 12.5mm, 9.5mm, 4.75mm, and SMA
- ▶ RAP is not currently used in any porous/pervious pavements
- ▶ Delaware allows up to 4% recycled asphalt shingles (RAS) in mixes, with the use of softer binders to counter the stiff asphalt
 - Rejuvenator is used as additive to soften shingles

Use of Recycled Asphalt Pavement (RAP)

- ▶ DelDOT has a RAP calculator
 - Determines end result PG grade when combining RAP or RAS with virgin asphalt (VMA).
 - Used daily by State Material Inspectors to verify aggregate percentages at plants
- ▶ Premature Cracking has been noticed in some pavements with high percentages of RAP/RAS

Repair Alternatives

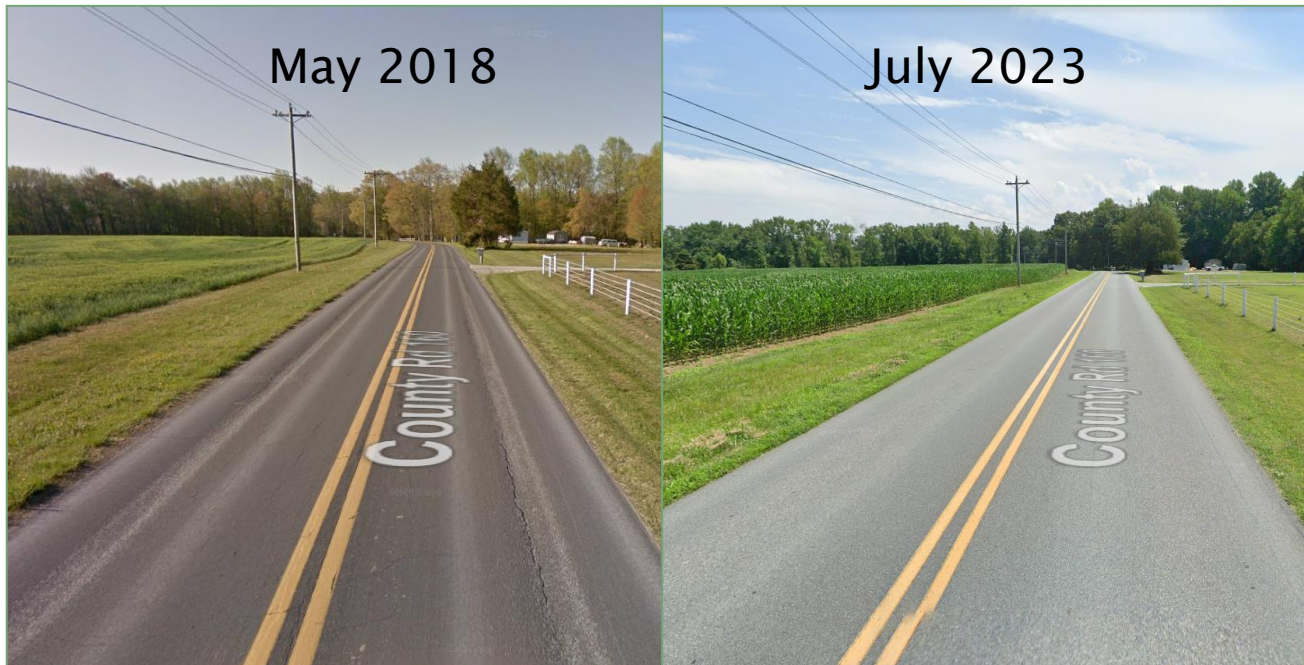
- ▶ DelDOT sees a lot of segregation on projects.
 - Requiring contract to fog seal rather than mill and replace material



Repair Alternatives

- ▶ Amish Buggy Ruts

- Overlaying with PG 88-22 on high buggy traffic roads



- ▶ Maidstone Branch Rd
 - Overlayed in 2020 with 88-22
 - Have not seen a reappearance in rutting in past 3 years