

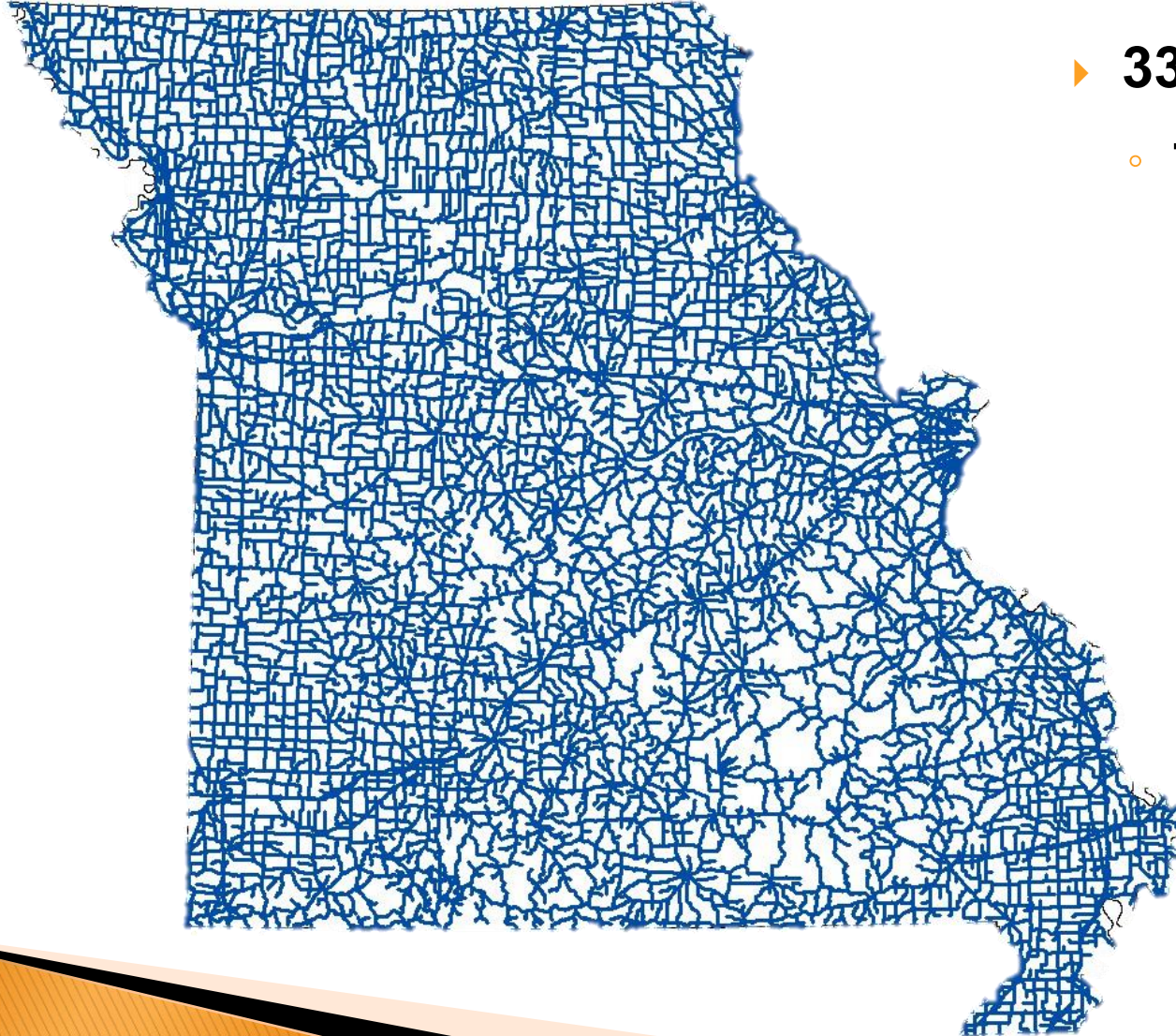


# Pavement Preservation Update

September 18, 2023

Phil Ruffus

# Our system



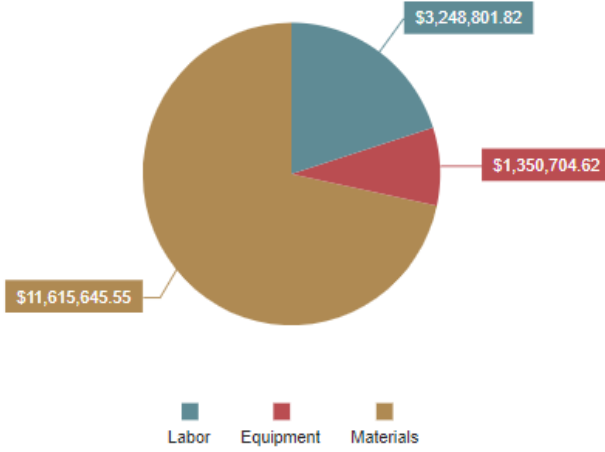
- ▶ **33,825 Centerline miles**
  - **77,563 Lane miles**



# 2022 Chip Seal Routes Completed by Maintenance Forces

2,245.56 LANE MILE  
0.00

Estimated Costs

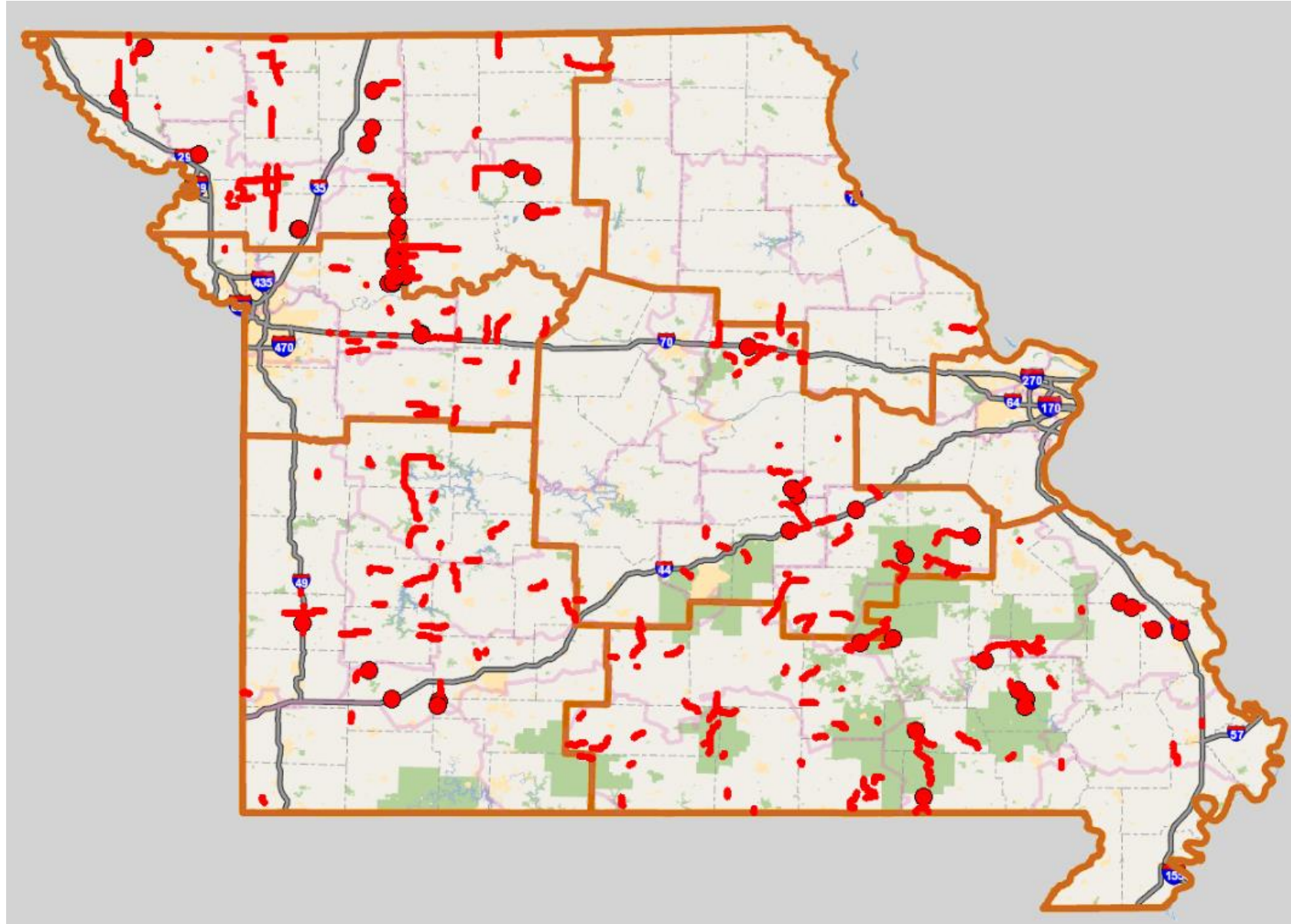


Labor Equipment Materials

Toggle Scale Reset Chart Export

Total Estimated Cost -  
\$16,215,151.99

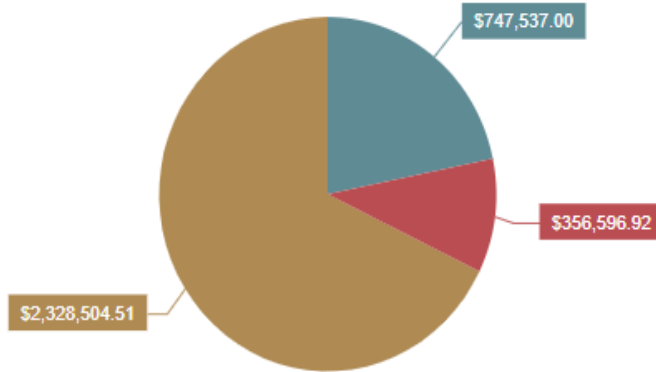
Cost/LANE MILE - \$7,151.60  
Cost/ - \$0.00



# 2022 Fog Seal and Scrub Seals Completed by Maintenance Forces

1,091.20 LANE MILE  
0.00 TON

Estimated Costs

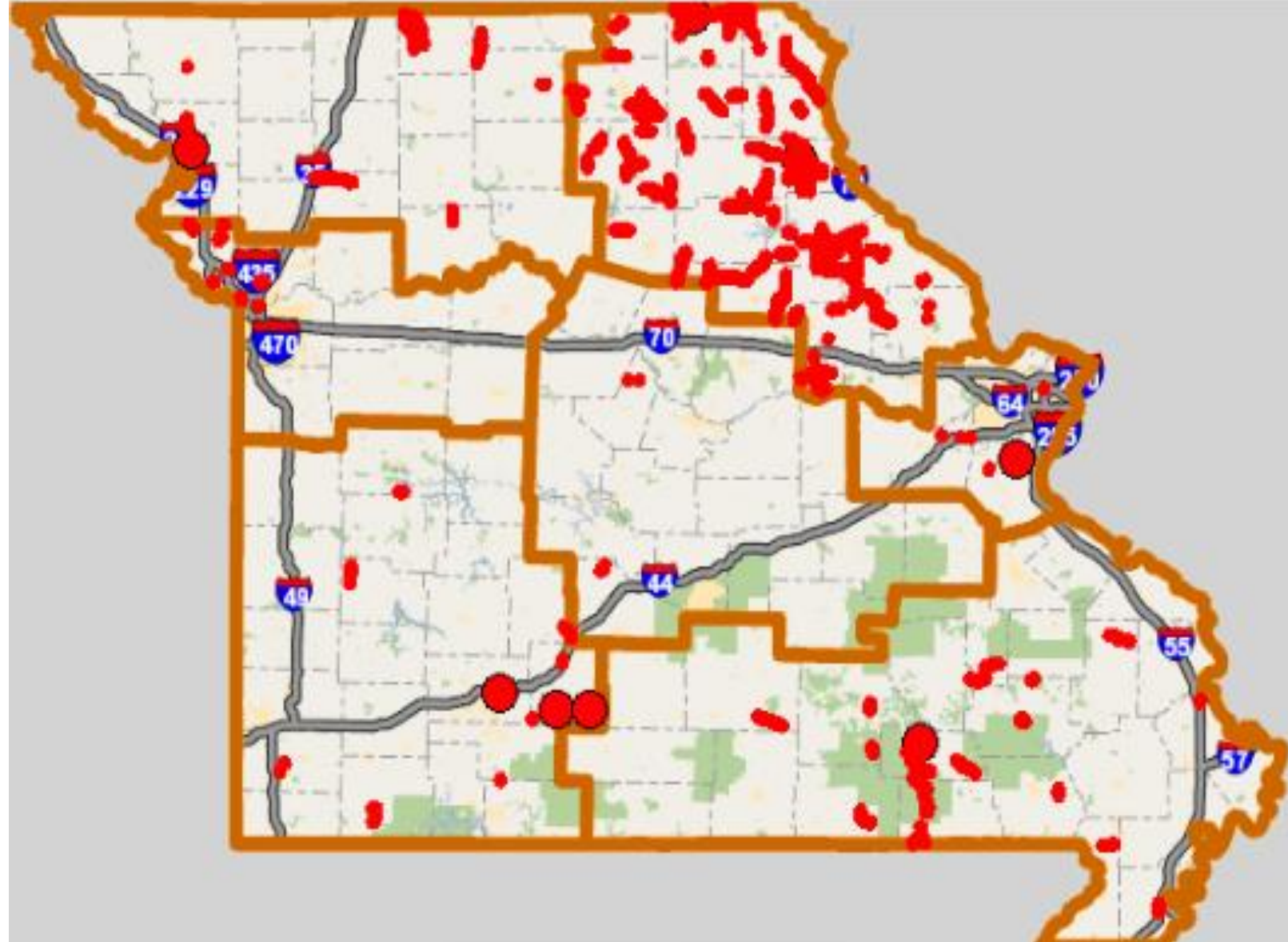


Labor Equipment Materials

Toggle Scale Reset Chart Export

Total Estimated Cost -  
\$3,432,638.43

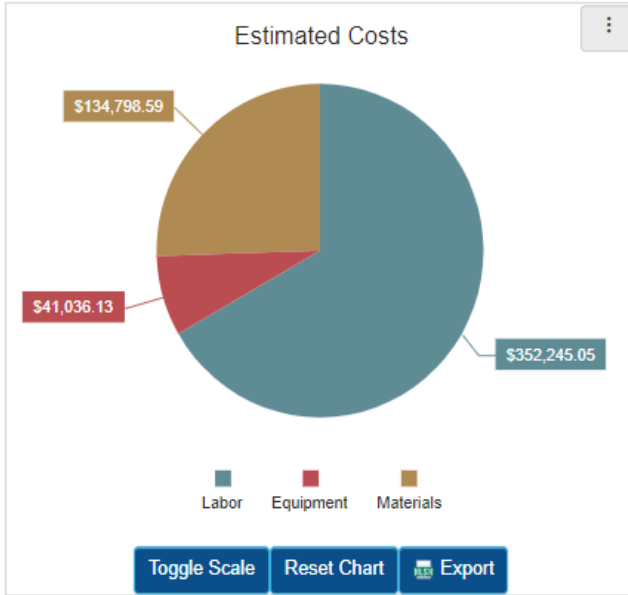
Cost/LANE MILE - \$3,286.56  
Cost/TON - \$0.00





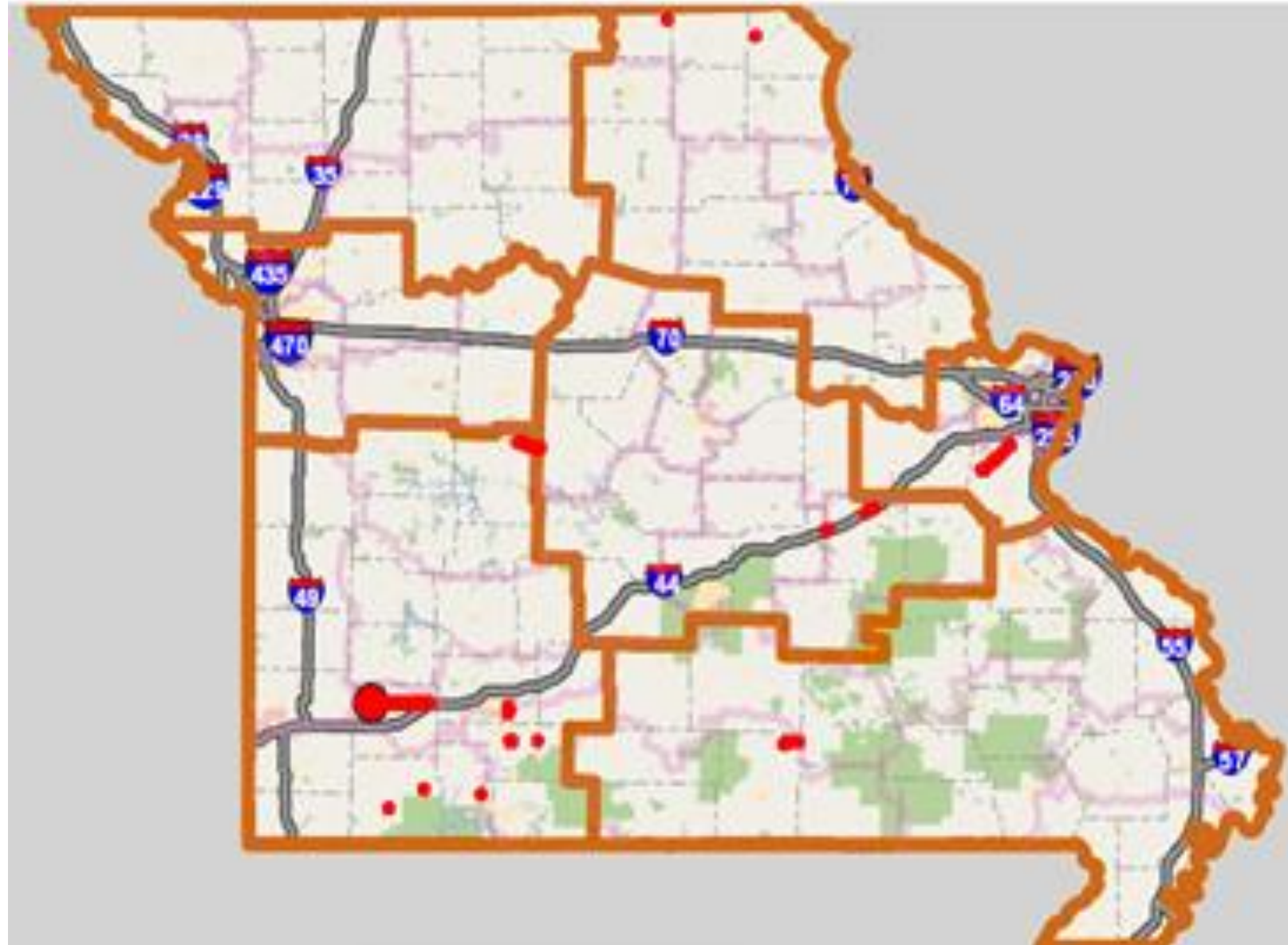
# 2022 Crack Sealing completed by Maintenance Forces

192,505.00 POUND



Total Estimated Cost - \$528,079.77

Cost/POUND - \$2.74



# Fixed Price Variable Scope Results 2022

- Crack Sealing – 296 Lane Miles
  - Chip Seals – 31 Lane Miles
  - Cape Seals – 48 Lane Miles
  - HPCPM – 40 Lane Miles
- 
- A yellow road maintenance truck is shown performing crack sealing on a road surface. The truck is equipped with a large hopper and a spreading mechanism. A worker in a high-visibility vest and hard hat is visible on the truck. The background shows a clear blue sky and a green field.