

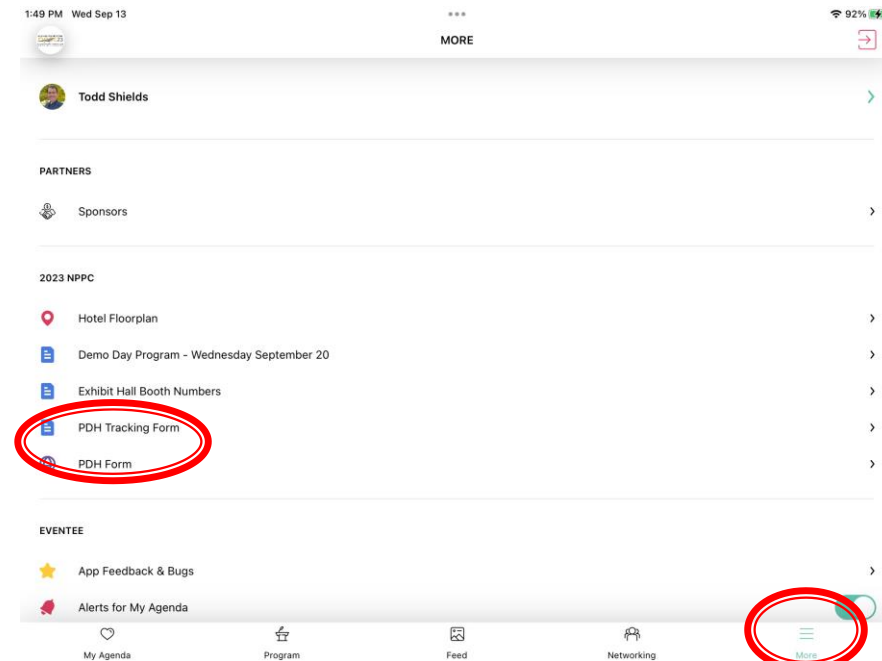
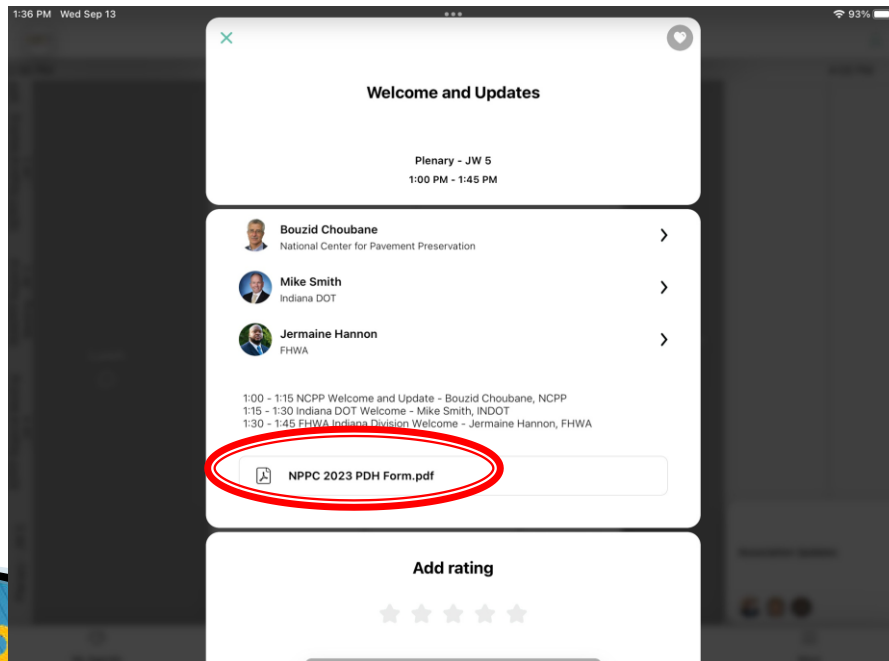
NPPC Field Demonstration Overview

Todd Shields, NCPP

Wednesday September 20, 2023

Professional Development Hours

- ▶ PDH Tracking Forms were emailed to all attendees last week
- ▶ Also available in the Eventee App
 - More>>2023 NPPC
 - Or in this session (also in Gary Hicks closing session)



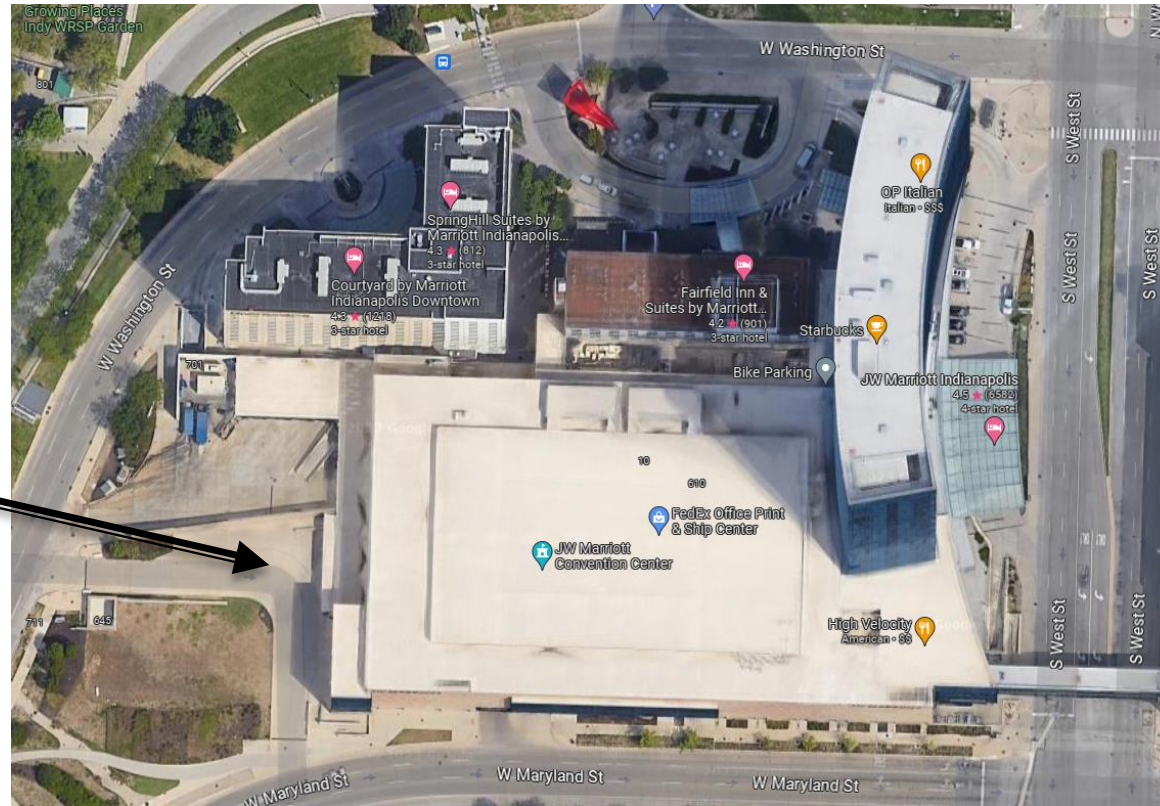
Demo Day Schedule

10:30	Load buses from Marriott
10:50	Arrive at Douglas Park for HIR Demo
11:20	Load buses from Douglas Park
11:30	Buses arrive at FB, begin lunch, peruse posters and INDOT display equipment
12:30	Begin static rotations (11 displays, 10 min each)
2:45	Begin live demos (10 demos, 12 min each)
5:00	Free time to look at treatments
5:30	Load buses to return to Marriott

Bus Loading JW Marriott

- ▶ Buses will load at the REAR of the hotel

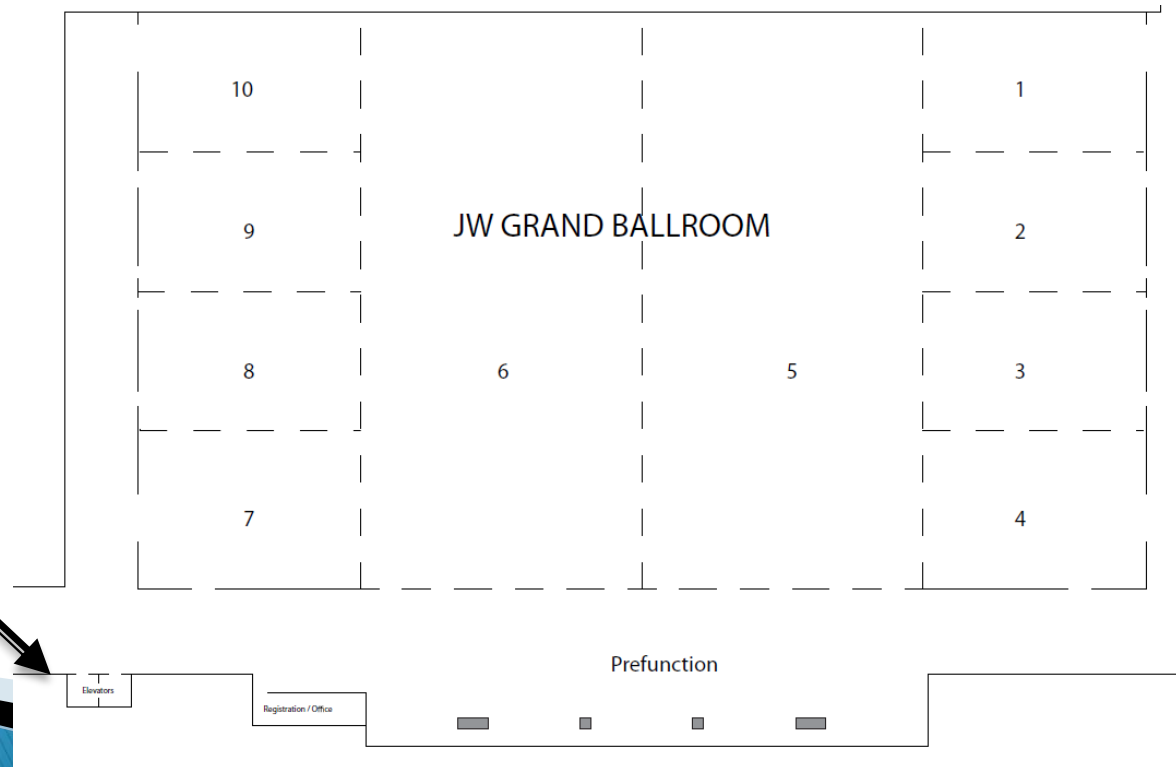
Load Here – Event
Center Drive



How to Get to the Event Center

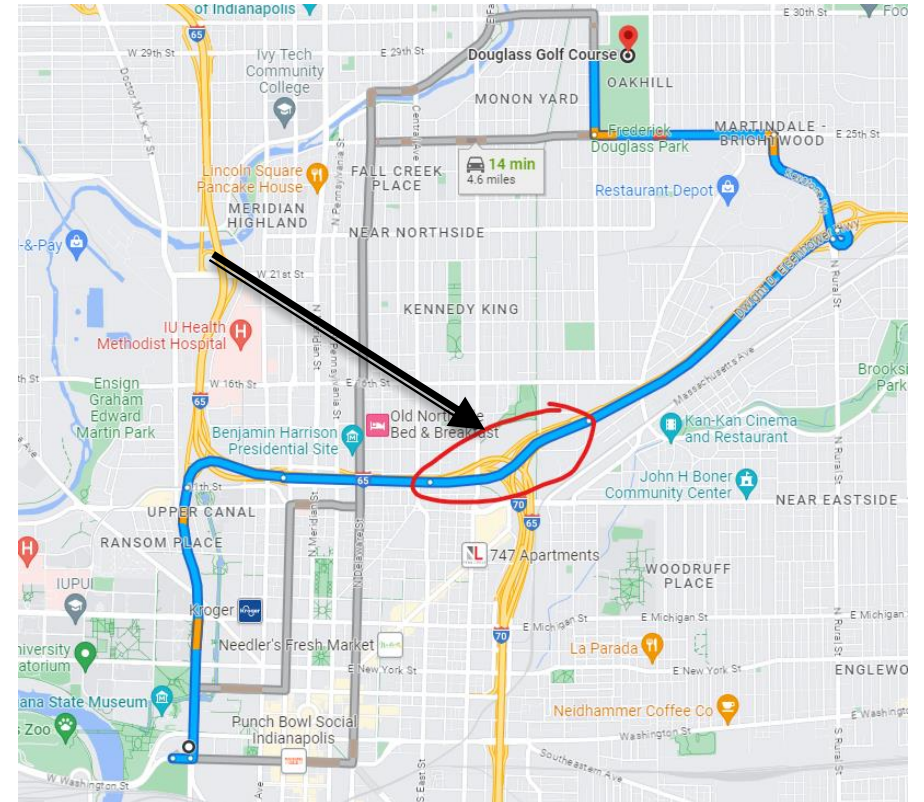
- ▶ Take SW elevators to Floor 1 (there are 2 elevators)
 - Go out of JW 5 and turn RIGHT
- ▶ You CANNOT get to the event center from the lobby

Elevators to Event
Center



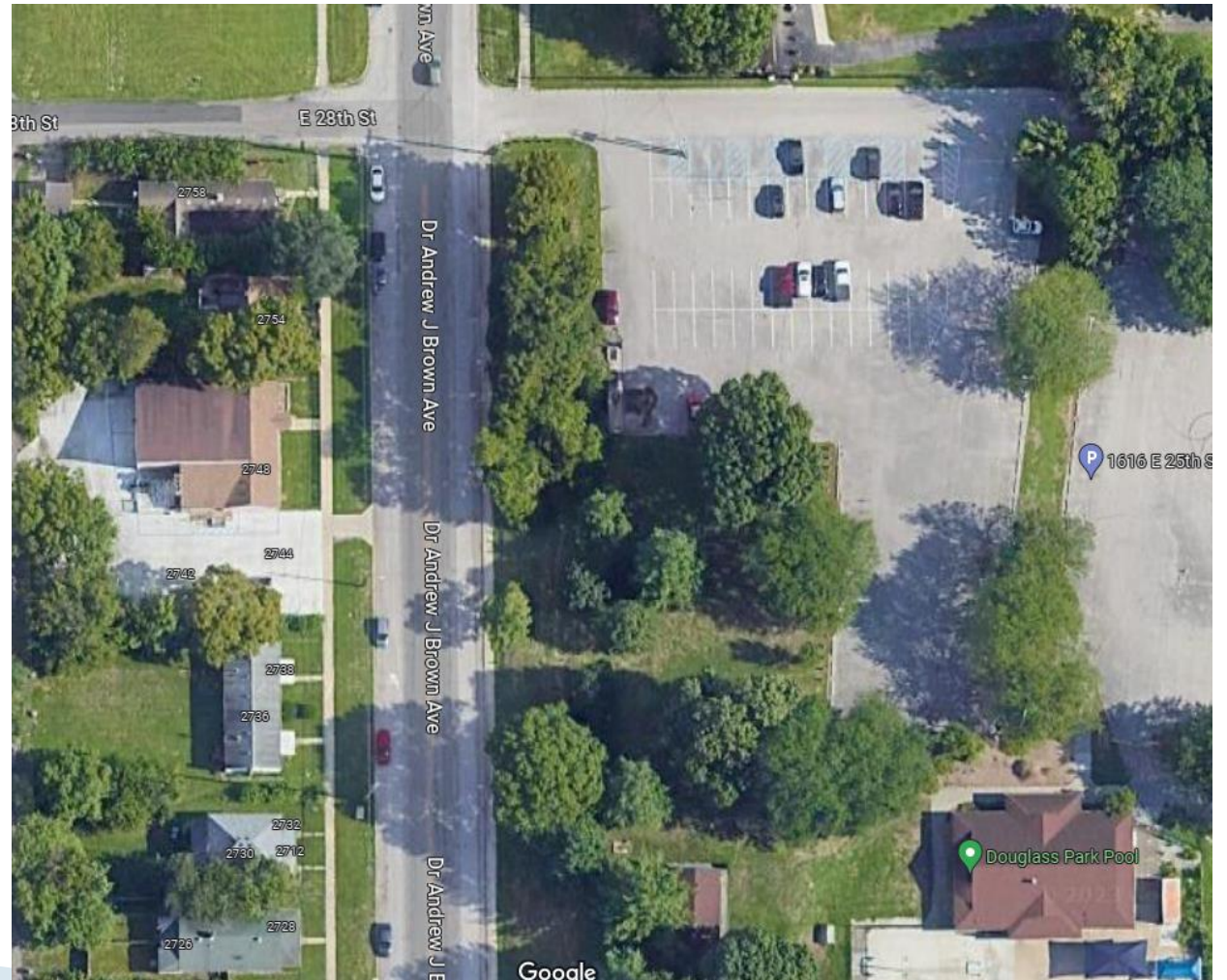
Next Generation Concrete Surface

- ▶ I-65/I-70 North Split – recently reconstructed
- ▶ 2 Pass Grinding system with longitudinal tining
- ▶ Special cutting heads to achieve a smooth and low noise surface
- ▶ Developed by Purdue University



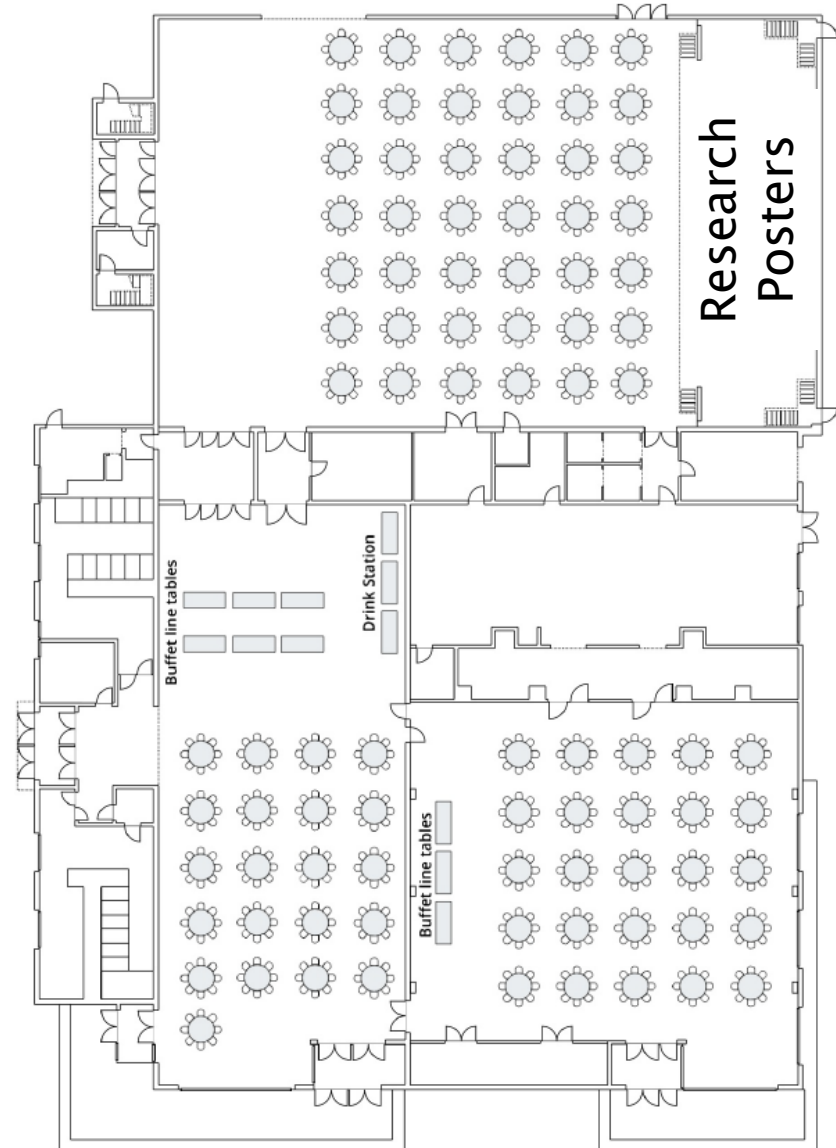
Hot In Place Recycling Visit

- ▶ Dr. Andrew J Brown Ave.
- ▶ Vicinity of Douglas Park
- ▶ Sidewalks
- ▶ Road Closure
- ▶ Load Buses for Fairgrounds
No Later than 11:20



Lunch and Poster in FB Building

- ▶ 11:30 – 12:30
- ▶ Lunch inside – 3 rooms, 2 buffet lines
- ▶ INDOT Research Posters in Auditorium
- ▶ INDOT Pavement Evaluation Equipment outside
 - FWD
 - 3D Laser
 - Star Wars Van
 - Slab Jacking Rig



Narrated Static Displays

- ▶ 12:30 – 2:30
- ▶ Nametag has Group Number
- ▶ Start at that station at 12:30
 - Each Group will have a Leader (Orange Vest)
- ▶ Will then “rotate” counterclockwise every 10 minutes

Narrated Static Displays – Group Leaders

Group	Name	Company
1	Pierre Peltier	Strawser
2	Charles Taylor	Ergon
3	Traci Powell	INDOT
4	Larry Tomkins	Ergon
5	Frank Sailer	INDOT
6	Bill Flora	INDOT
7	Nathan Awwad	INDOT
8	Chris Duke	Ergon
9	Bobby Behrens	Strawser
10	Pat Stivers	CRAFICO
11	Alessandra Crawford	CRAFICO

Static Displays

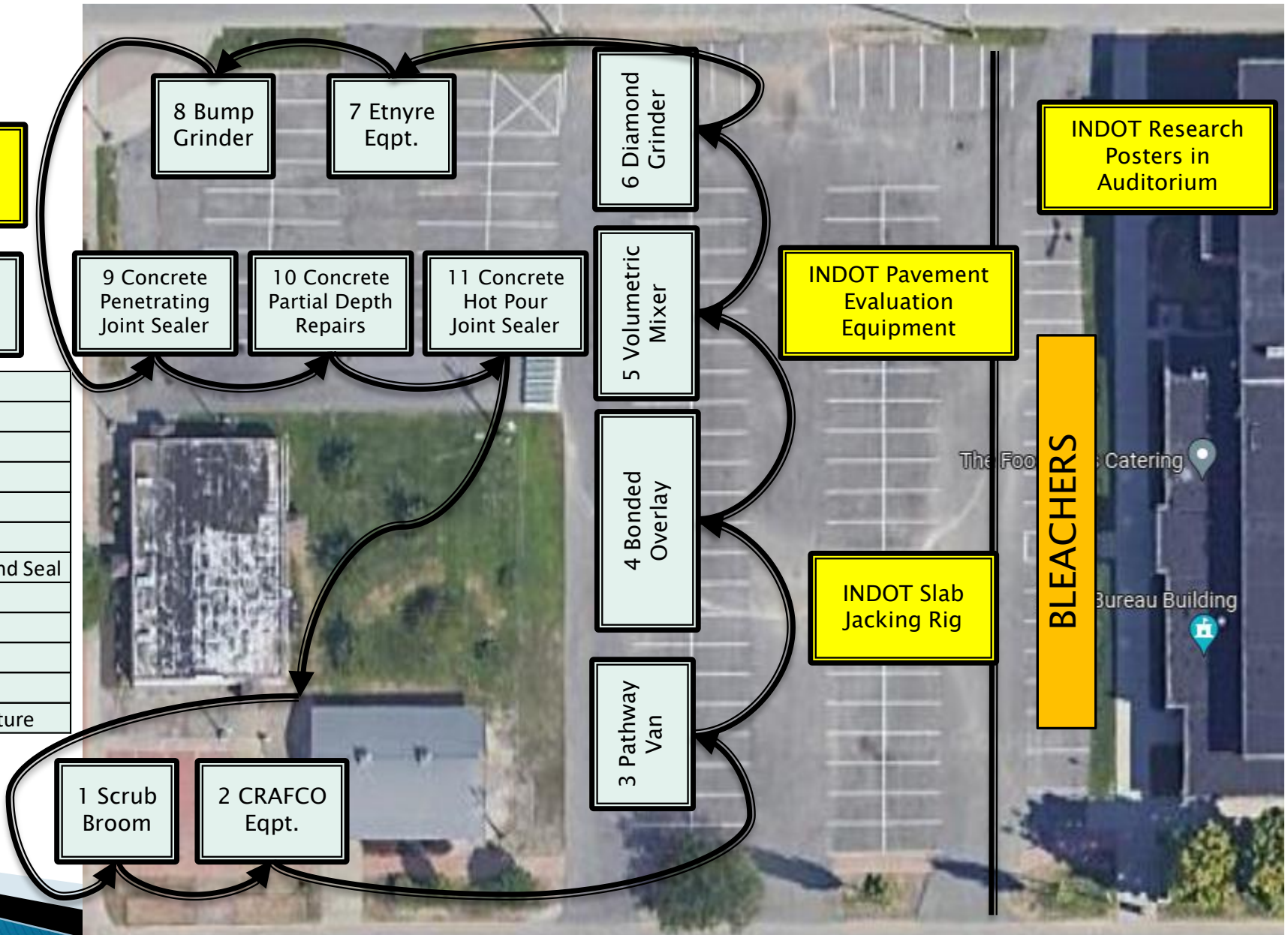
Wednesday September 20, 2023

Indiana DOT Evaluation Equipment and Research Posters On Display 11:00 - 12:15

Narrated Static Displays 12:30 - 2:30
 Stay in your group! Stay in order!
 10 Minutes per Display

Equipment	Contractor
1 Greensbroom Scrubber	Greensbroom
2 Crack Equipment	CRAFCO
3 Pavement Evaluation Van	Pathway
4 Bonded Concrete Overlay	Rapid Set/CTS
5 Volumetric Mixer	Rapid Set/CTS
6 Diamond Grinder	Quality Saw and Seal
7 Etnyre Crack Sealer	Etnyre
8 Flatliner Grinder	Keystone
9 Concrete Performed Compression Seal	DS Brown
10 Concrete Partial Depth repairs	DS Brown
11 Concrete Hot Pour Joint Sealant	FPT Infrastructure

Make Sure to be in Bleachers by 2:45 to Begin Live Demos



Live Treatment Demos

- ▶ 2:45 – 5:00
- ▶ Get into bleachers by 2:45
- ▶ Stay in bleachers, or behind barricade, for duration of live demos

Live Demonstrations

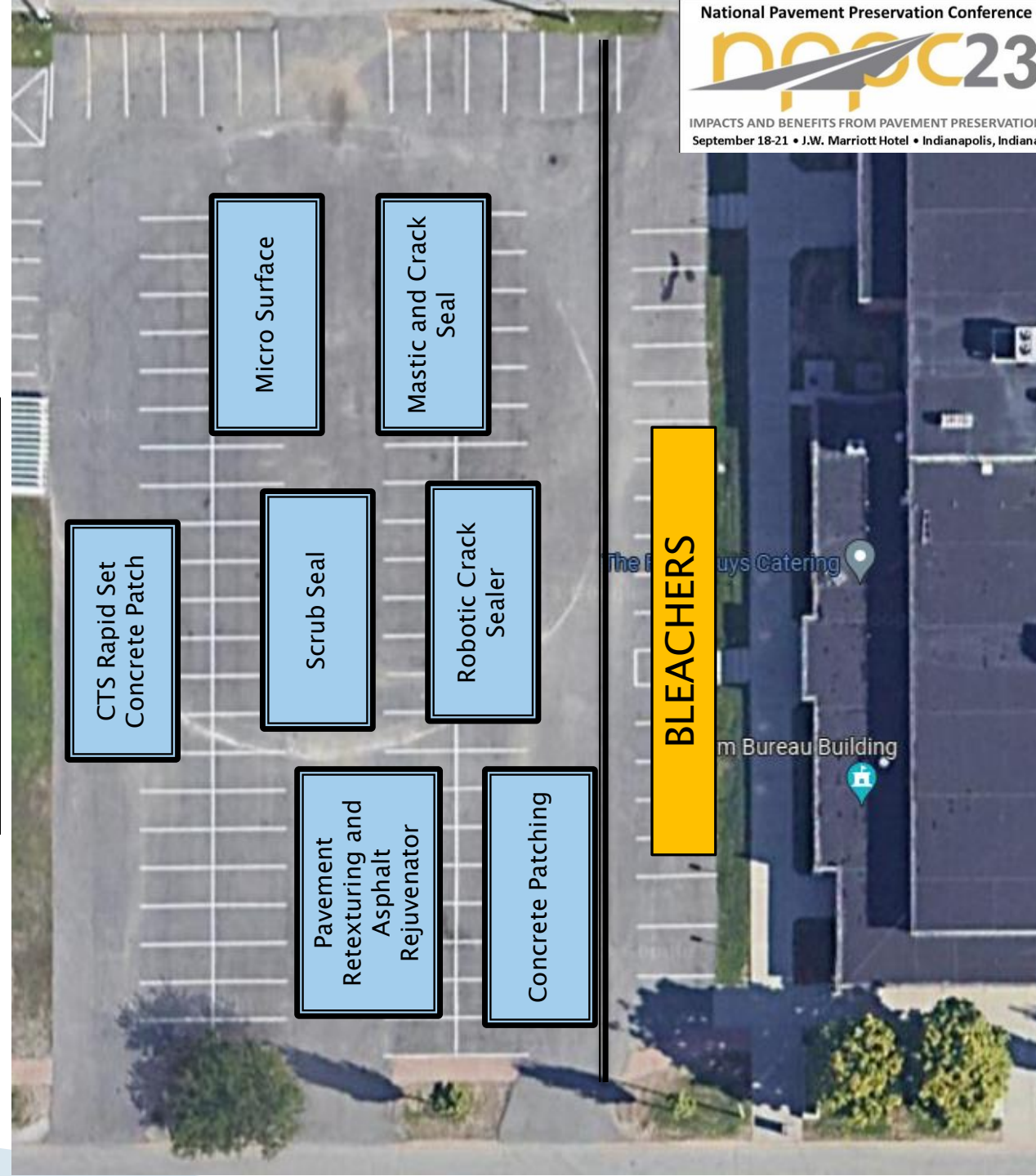
Live Treatment Demonstrations Begin at 2:45.
 Please Remain in Bleachers or Behind Barricades until Complete.

We will have time after Demos to walk and look at treatments.

	Treatment	Contractor
	Hot In Place Recycling	Gallagher Asphalt (off site)
1	Rapid Set Concrete Patch	CTS/Rapid Set
2	Concrete Patch Materials	FPT Infrastructure
3	RMV Robotic Crack Sealer	RMV/Sealmaster Robotic Crack Sealer
4	Mastic and Crack Seal	CRAFICO
6	Pavement Retexturing	Skidabrader
7	Maltene Based Rejuvenator	Pavement Technology, Inc.
8	Scrub Seal	Pavement Maintenance Systems/Etnyre
9	Microsurface	Pavement Solutions

Buses will begin loading at 5:30 for return to Marriott.

Dinner on your own.



Micro Surface

Mastic and Crack Seal

CTS Rapid Set Concrete Patch

Scrub Seal

Robotic Crack Sealer

BLEACHERS

Pavement Retexturing and Asphalt Rejuvenator

Concrete Patching

Demo Day Details

- ▶ Once live demo's are completed (~5:00), we will have time to go down and look at treatments
- ▶ Should start loading buses back to JW Marriott by 5:30
- ▶ No need for PPE, but wear comfortable cloths and sturdy shoes
- ▶ Bleachers are not covered
- ▶ Dinner is on your own

Parking Lot “Hand Back” Sponsors



Asphalt Materials, Inc.

 **Pathway Services Inc.**

Questions???



Todd Shields
National Center for Pavement Preservation
shiel118@msu.edu

